

## **Appendix D3**

Site Boundary  
Amendments made  
after Site Visits





**Employment Land Supply Assessment**

**ARUP**

Epping Forest District Council

Drawing No. Map 2

Date: December 2017

Scale: 1:21,500 @A3

**Content**

Site boundary amendments made after site visits in Chigwell

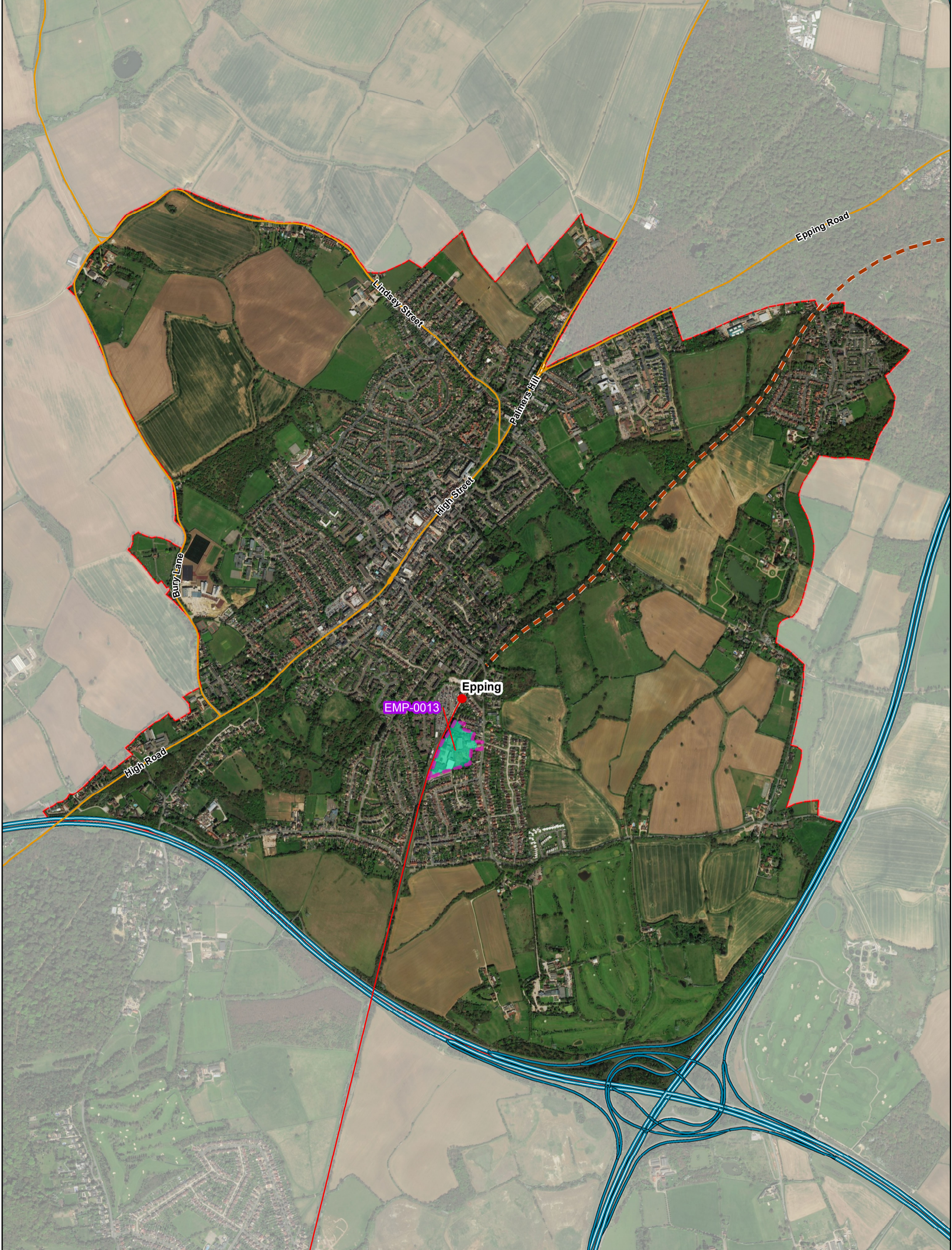
Source: Esri, DigitalGlobe, GeoEye, Earthstar Geographics, CNES/Airbus DS, USDA, USGS, AEX, Getmapping, Aerogrid, IGN, IGP, swisstopo and the GIS User Community

Contains Ordnance Survey & Royal Mail Data  
© Crown Copyright & Database Right 2016  
EFDC Licence No: 100018534 2016

**Legend**

- Former employment site boundary
- Parish Boundary
- Revised employment site boundary

N  
▲



**Employment Land Supply Assessment**



Epping Forest District Council

Drawing No. Map 2




Date: December 2017

Scale: 1:13,000 @A3

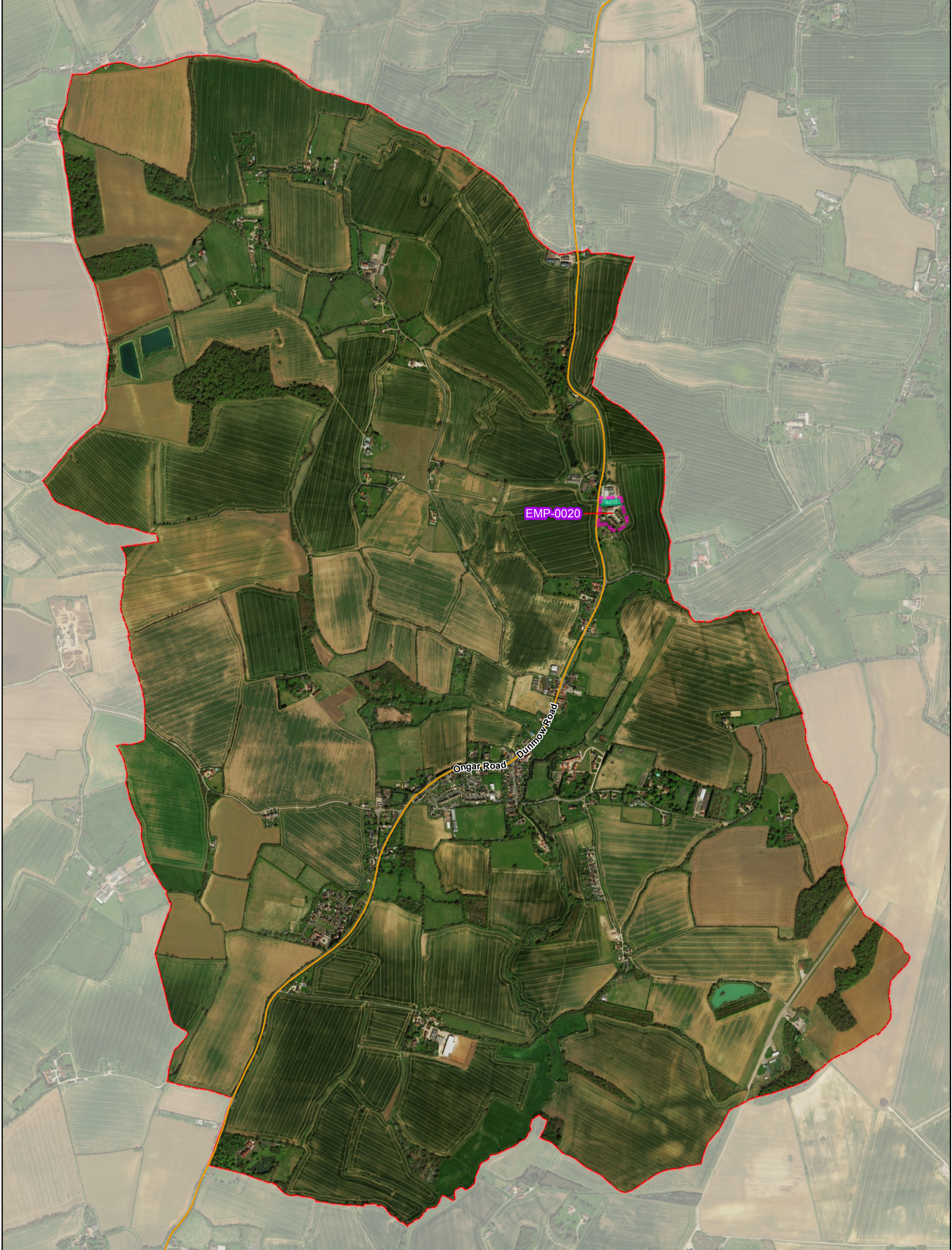
**Content**  
Site boundary amendments made after site visits in Epping

Source: Esri, DigitalGlobe, GeoEye, Earthstar Geographics, CNES/Airbus DS, USDA, USGS, AEX, Getmapping, Aerogrid, IGN, IGP, swisstopo and the GIS User Community.  
Contains Ordnance Survey & Royal Mail Data  
© Crown Copyright & Database Right 2016  
EFDC Licence No: 100018534 2016

**Legend**

-  Former employment site boundary
-  Parish Boundary
-  Revised employment site boundary





**Employment Land Supply Assessment**



Drawing No.  
Map 2




Date: December 2017

Scale: 1:13,000 @A3

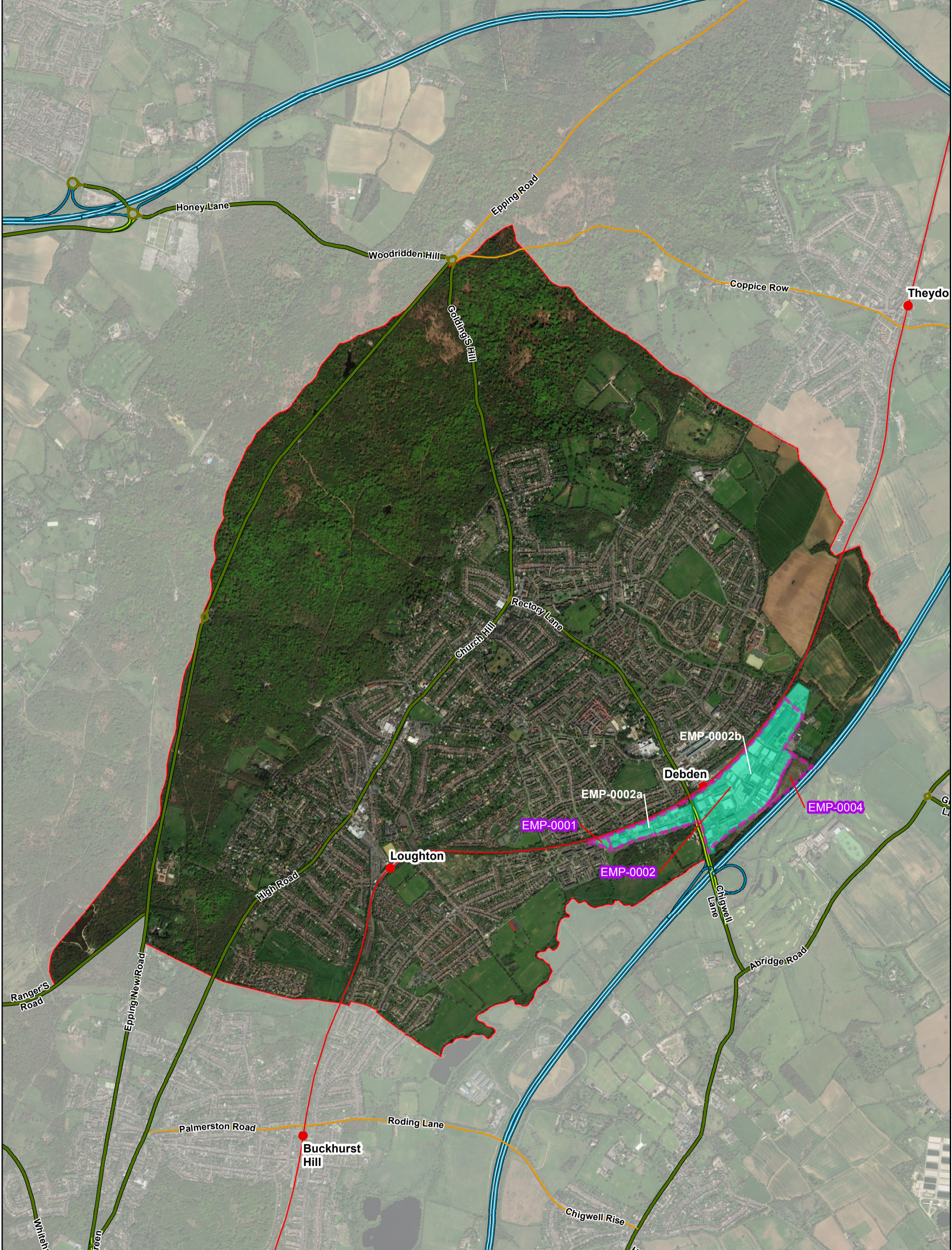
**Content**  
Site boundary amendments made after site visits in Fyfield

Source: Esri, DigitalGlobe, GeoEye, Earthstar Geographics, CNES/Airbus DS, USDA, USGS, AEX, Getmapping, Aerogrid, IGN, IGP, swisstopo and the GIS User Community.  
Contains Ordnance Survey & Royal Mail Data  
© Crown Copyright & Database Right 2016  
EFDC Licence No: 100018534 2016

**Legend**

-  Former employment site boundary
-  Revised employment site boundary
-  Parish Boundary





**Employment Land Supply Assessment**

**ARUP**

Epping Forest District Council

Drawing No. Map 2

Date: December 2017

Scale: 1:20,500 @A3

**Content**

Site boundary amendments made after site visits in Loughton

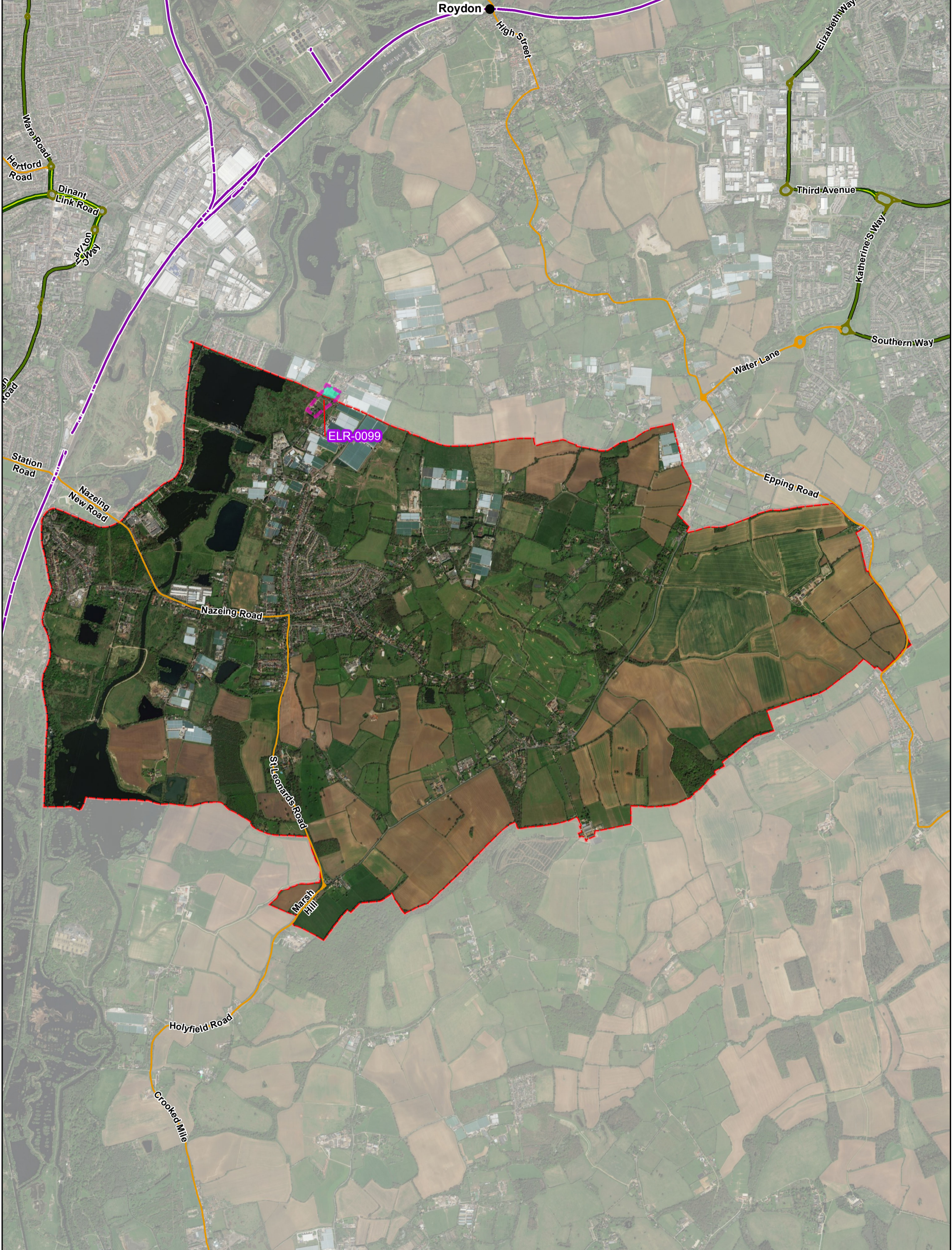
Source: Esri, DigitalGlobe, GeoEye, Earthstar Geographics, CNES/Airbus DS, USDA, USGS, AEX, Getmapping, Aerogrid, IGN, IGP, swisstopo and the GIS User Community.

Contains Ordnance Survey & Royal Mail Data  
© Crown Copyright & Database Right 2016  
EFDC Licence No: 100018534 2016

**Legend**

- Former employment site boundary
- Parish Boundary
- Revised employment site boundary

N



**Employment Land Supply Assessment**

**ARUP**

Epping Forest District Council

Drawing No. Map 2

Date: December 2017

Scale: 1:24,500 @A3

**Content**

Site boundary amendments made after site visits in Nazeing

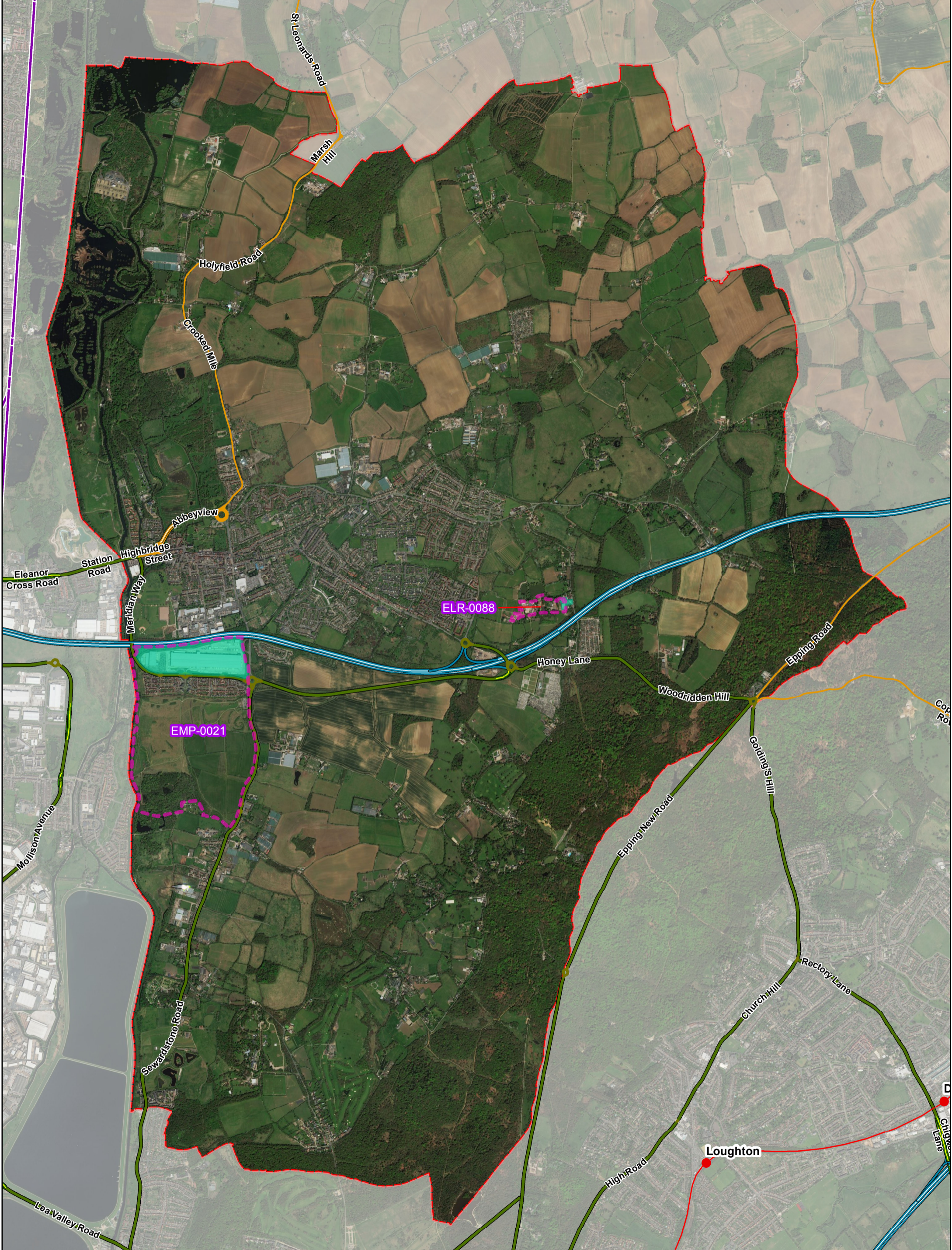
Source: Esri, DigitalGlobe, GeoEye, Earthstar Geographics, CNES/Airbus DS, USDA, USGS, AEX, Getmapping, Aerogrid, IGN, IGP, swisstopo and the GIS User Community.

Contains Ordnance Survey & Royal Mail Data  
© Crown Copyright & Database Right 2016  
EFDC Licence No: 100018534 2016

**Legend**

- Former employment site boundary
- Parish Boundary
- Revised employment site boundary

N



**Employment Land Supply Assessment**  
**ARUP**  
 Epping Forest District Council

Drawing No. Map 2  
 Date: December 2017  
 Scale: 1:27,000 @A3

**Content**  
 Site boundary amendments made after site visits in Waltham Abbey

Source: Esri, DigitalGlobe, GeoEye, Earthstar Geographics, CNES/Airbus DS, USDA, USGS, AEX, Getmapping, Aerogrid, IGN, IGP, swisstopo and the GIS User Community.

Contains Ordnance Survey & Royal Mail Data  
 © Crown Copyright & Database Right 2016  
 EFDC Licence No: 100018534 2016

**Legend**

- Former employment site boundary
- Parish Boundary
- Revised employment site boundary

N