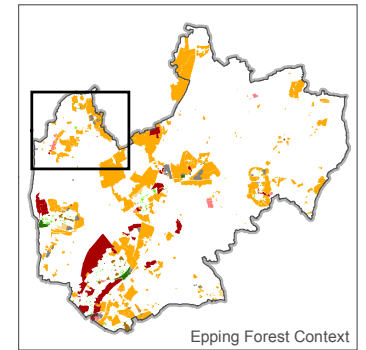


**Key**

- Epping Forest Local Authority Boundary
- Site Suitability**
- Sites filtered/discarded
- Sites unsuitable due to other factors
- Sites unsuitable due to strategic constraints
- Sites suitable outside current policy (Green Belt & Other)
- Sites suitable outside current policy (Green Belt)
- Sites suitable outside current policy (Other)
- Sites suitable within current policy
- Sites suitable for commercial development



The SLAA does not allocate land for development or indicate that the Council would support its development. The sites provide a range of potential locations where development might be considered through the plan.

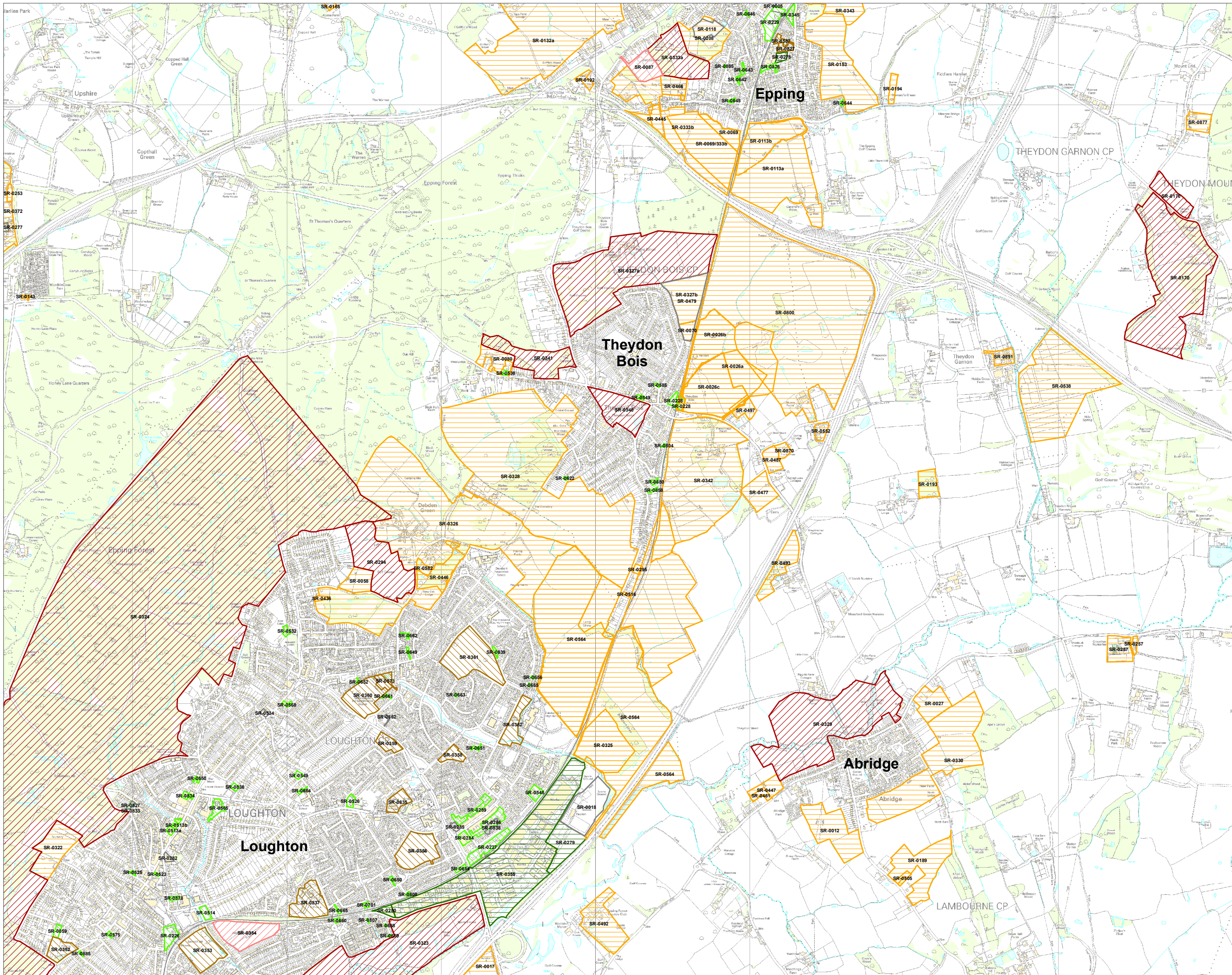
These maps show the emerging headline assessments from the suitability analysis of each site. They should only be interpreted alongside the full SLAA assessment for each site.

Headline site assessments relate to a site in its entirety. Constituent parts of some suitable sites, as per the boundary shown on this map, may not be suitable for development where factors affect only a portion of the site. The capacity of a site to accommodate development has been adjusted in these cases and the headline assessment relates only to the development capacity the SLAA has attributed to the site.

**Nathaniel Lichfield & Partners**  
Planning, Design, Economics.

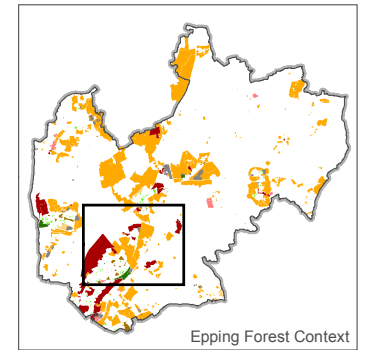
Project	Epping Forest SLAA
Title	All Sites - Suitability: Epping Green, Nazeing & Roydon
Client	Epping Forest District Council
Date	18.05.2016
Scale	-
Drawn by	MAR
Drg No	GIS12991101-30

Based upon Ordnance Survey mapping with the permission of Her Majesty's Stationery Office. © Crown Copyright reserved. Licence number AL5000AA  
GIS Reference: S:\CL12991 - Epping Forest SLAA (2016)\CL12991 - Epping Forest SLAA (2016) - All Sites - Suitability (09) - 18.05.2016.mxd



**Key**

- Epping Forest Local Authority Boundary
- Site Suitability**
- Sites filtered/discouraged
- Sites unsuitable due to other factors
- Sites unsuitable due to strategic constraints
- Sites suitable outside current policy (Green Belt & Other)
- Sites suitable outside current policy (Green Belt)
- Sites suitable outside current policy (Other)
- Sites suitable within current policy
- Sites suitable for commercial development



The SLAA does not allocate land for development or indicate that the Council would support its development. The sites provide a range of potential locations where development might be considered through the plan.

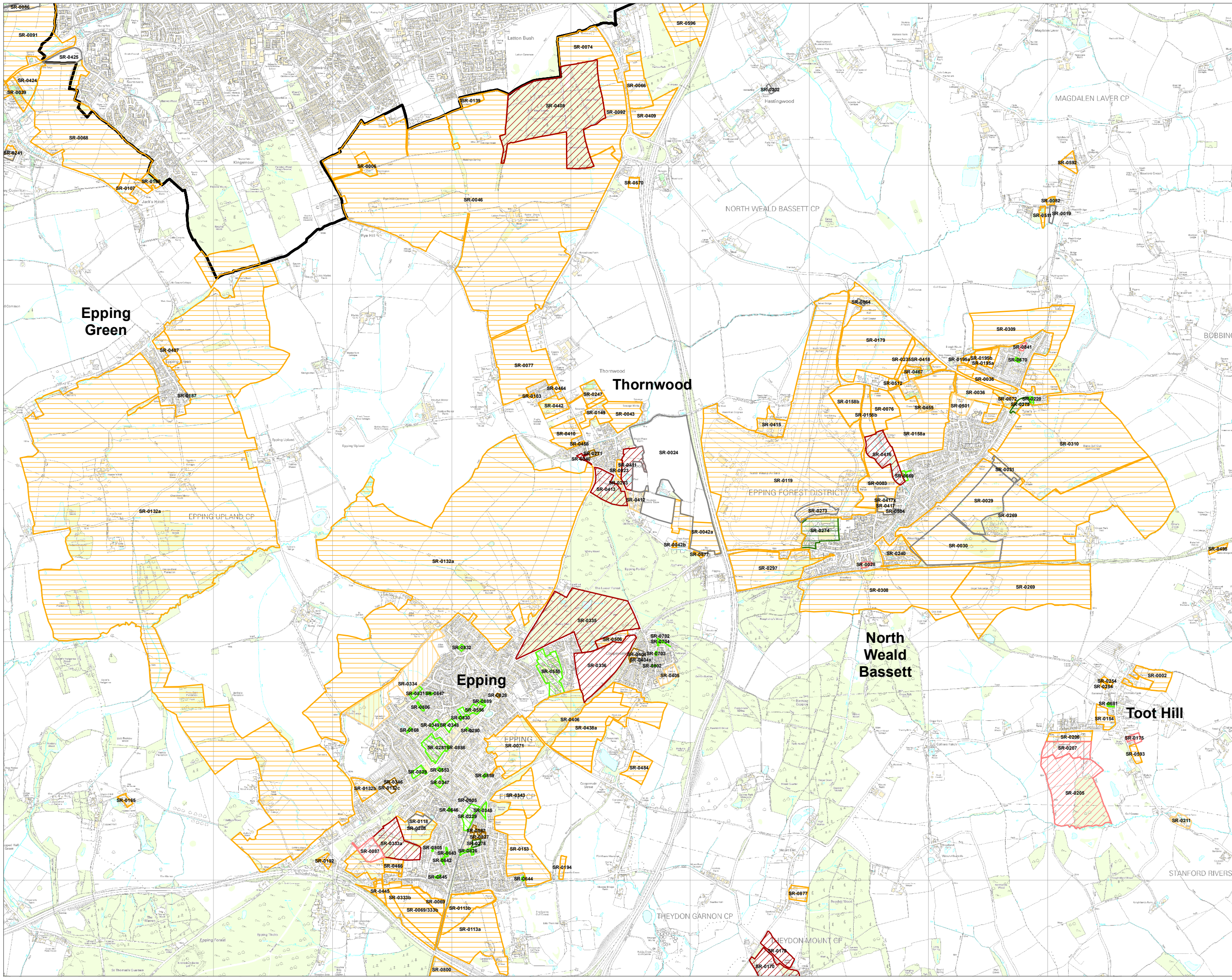
These maps show the emerging headline assessments from the suitability analysis of each site. They should only be interpreted alongside the full SLAA assessment for each site.

Headline site assessments relate to a site in its entirety. Constituent parts of some suitable sites, as per the boundary shown on this map, may not be suitable for development where factors affect only a portion of the site. The capacity of a site to accommodate development has been adjusted in these cases and the headline assessment relates only to the development capacity the SLAA has attributed to the site.

**nlp** Nathaniel Lichfield & Partners  
Planning, Design, Economics.

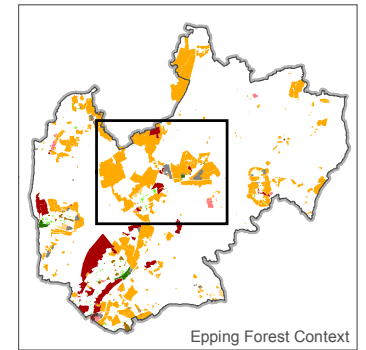
Project	Epping Forest SLAA
Title	All Sites - Suitability: Abridge, Epping, Loughton & Theydon Bois
Client	Epping Forest District Council
Date	18.05.2016
Scale	-
Drawn by	MAR
Drp No	GIS/12991/01-29

Based upon Ordnance Survey mapping with the permission of Her Majesty's Stationery Office. © Crown Copyright reserved. Licence number AL50004A  
GIS Reference: S:\CL\12991 - Epping Forest SLAA (2016)\CL12991 - Epping Forest SLAA (2016) - All Sites - Suitability (08) - 18.05.2016.mxd



**Key**

- Epping Forest Local Authority Boundary
- Site Suitability**
- Sites filtered/discounted
- Sites unsuitable due to other factors
- Sites unsuitable due to strategic constraints
- Sites suitable outside current policy (Green Belt & Other)
- Sites suitable outside current policy (Green Belt)
- Sites suitable outside current policy (Other)
- Sites suitable within current policy
- Sites suitable for commercial development



The SLAA does not allocate land for development or indicate that the Council would support its development. The sites provide a range of potential locations where development might be considered through the plan.

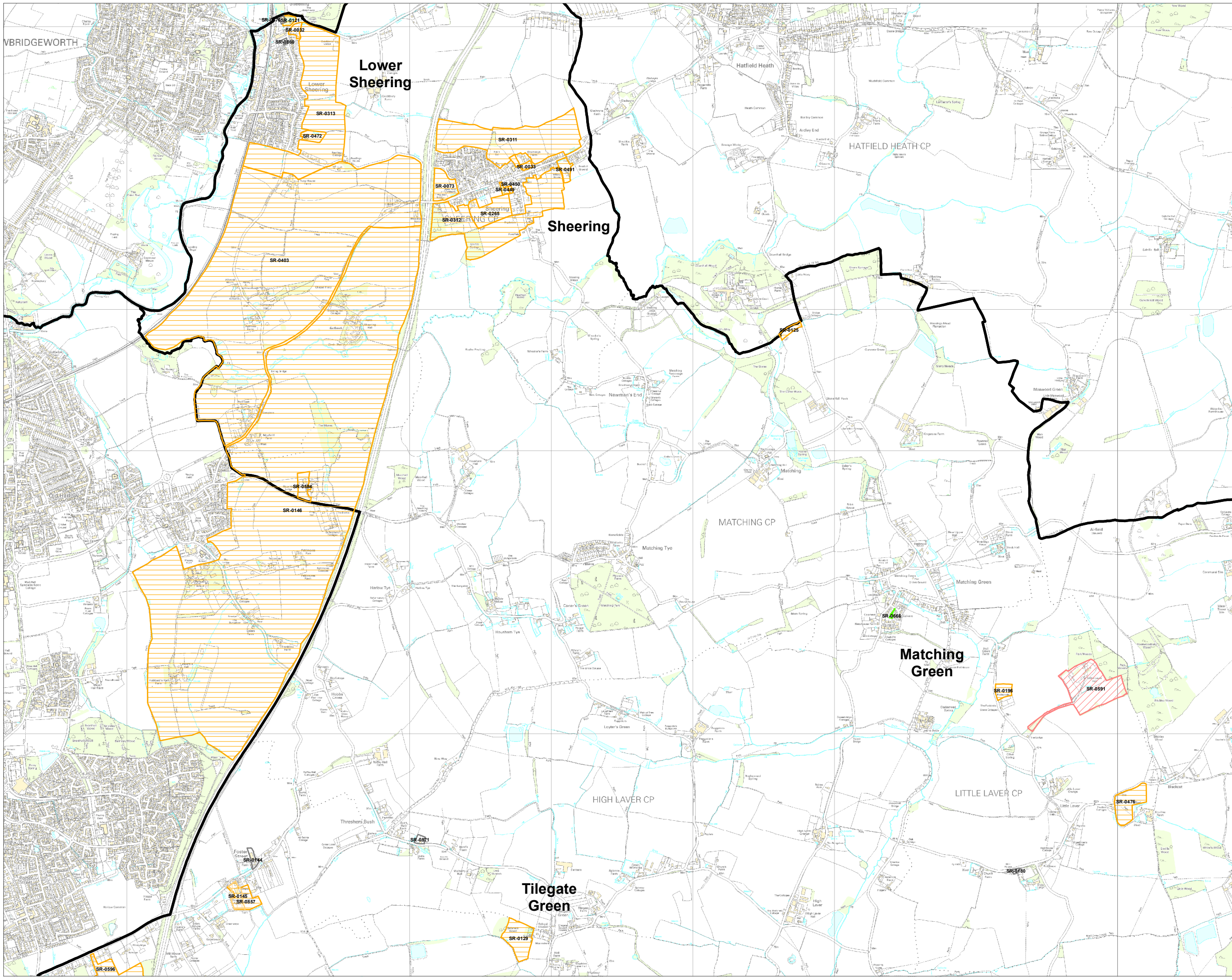
These maps show the emerging headline assessments from the suitability analysis of each site. They should only be interpreted alongside the full SLAA assessment for each site.

Headline site assessments relate to a site in its entirety. Constituent parts of some suitable sites, as per the boundary shown on this map, may not be suitable for development where factors affect only a portion of the site. The capacity of a site to accommodate development has been adjusted in these cases and the headline assessment relates only to the development capacity the SLAA has attributed to the site.



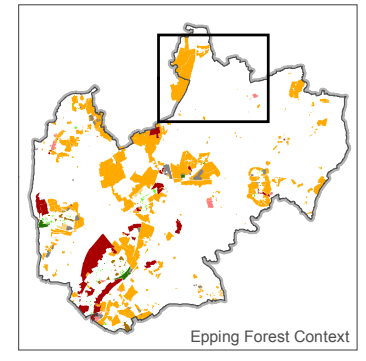
Project	Epping Forest SLAA
Title	All Sites - Suitability: Epping, Epping Green, North Weald Bassett, Thornwood & Toot Hill
Client	Epping Forest District Council
Date	18.05.2016
Scale	-
Drawn by	MAR
Dwg No	GIS\12991\01-28

Based upon Ordnance Survey mapping with the permission of Her Majesty's Stationery Office. © Crown Copyright reserved. Licence number AL5000AA  
 GIS Reference: S:\GL\12991 - Epping Forest SLAA (2016)\JCL12991 - Epping Forest SLAA (2016) - All Sites - Suitability (07) - 18.05.2016.mxd



**Key**

- Epping Forest Local Authority Boundary
- Site Suitability**
- Sites filtered/discouraged
- Sites unsuitable due to other factors
- Sites unsuitable due to strategic constraints
- Sites suitable outside current policy (Green Belt & Other)
- Sites suitable outside current policy (Green Belt)
- Sites suitable outside current policy (Other)
- Sites suitable within current policy
- Sites suitable for commercial development



The SLAA does not allocate land for development or indicate that the Council would support its development. The sites provide a range of potential locations where development might be considered through the plan.

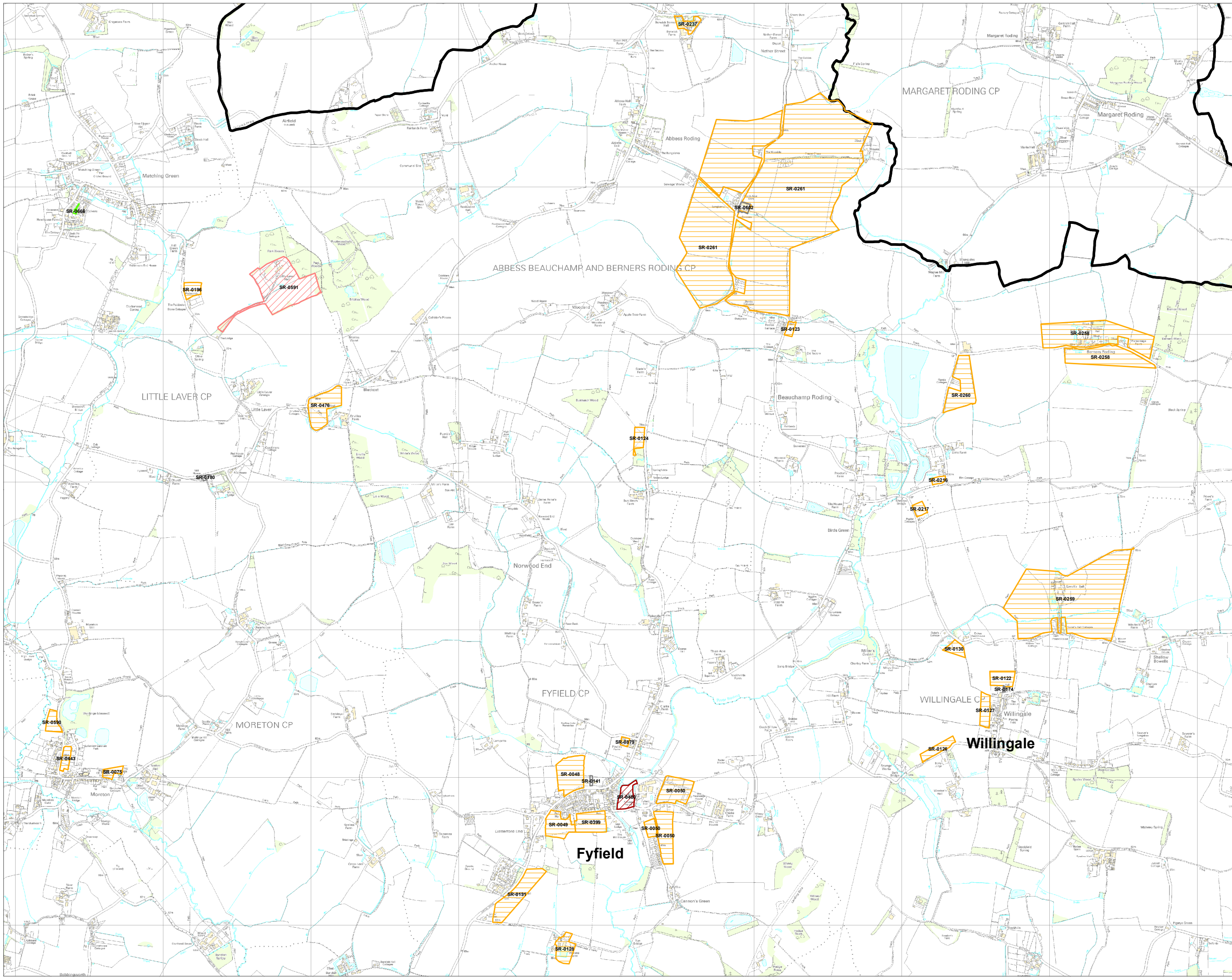
These maps show the emerging headline assessments from the suitability analysis of each site. They should only be interpreted alongside the full SLAA assessment for each site.

Headline site assessments relate to a site in its entirety. Constituent parts of some suitable sites, as per the boundary shown on this map, may not be suitable for development where factors affect only a portion of the site. The capacity of a site to accommodate development has been adjusted in these cases and the headline assessment relates only to the development capacity the SLAA has attributed to the site.

**nlp** Nathaniel Lichfield & Partners  
 Planning, Design, Economics.

Project	Epping Forest SLAA
Title	All Sites - Suitability: Lower Sheering, Matching Green, Sheering & Tilegate Green
Client	Epping Forest District Council
Date	18.05.2016
Scale	-
Drawn by	MAR
Drg No	GIS12991/01-27

Based upon Ordnance Survey mapping with the permission of Her Majesty's Stationery Office. © Crown Copyright reserved. Licence number AL5000AA  
 GIS Reference: S:\CL12991 - Epping Forest SLAA (2016)\CL12991 - Epping Forest SLAA (2016) - All Sites - Suitability (06) - 18.05.2016.mxd

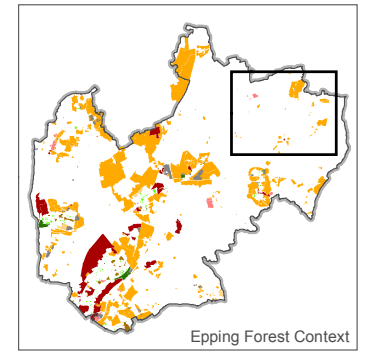


**Key**

- Epping Forest Local Authority Boundary

**Site Suitability**

- Sites filtered/discouraged
- Sites unsuitable due to other factors
- Sites unsuitable due to strategic constraints
- Sites suitable outside current policy (Green Belt & Other)
- Sites suitable outside current policy (Green Belt)
- Sites suitable outside current policy (Other)
- Sites suitable within current policy
- Sites suitable for commercial development



The SLAA does not allocate land for development or indicate that the Council would support its development. The sites provide a range of potential locations where development might be considered through the plan.

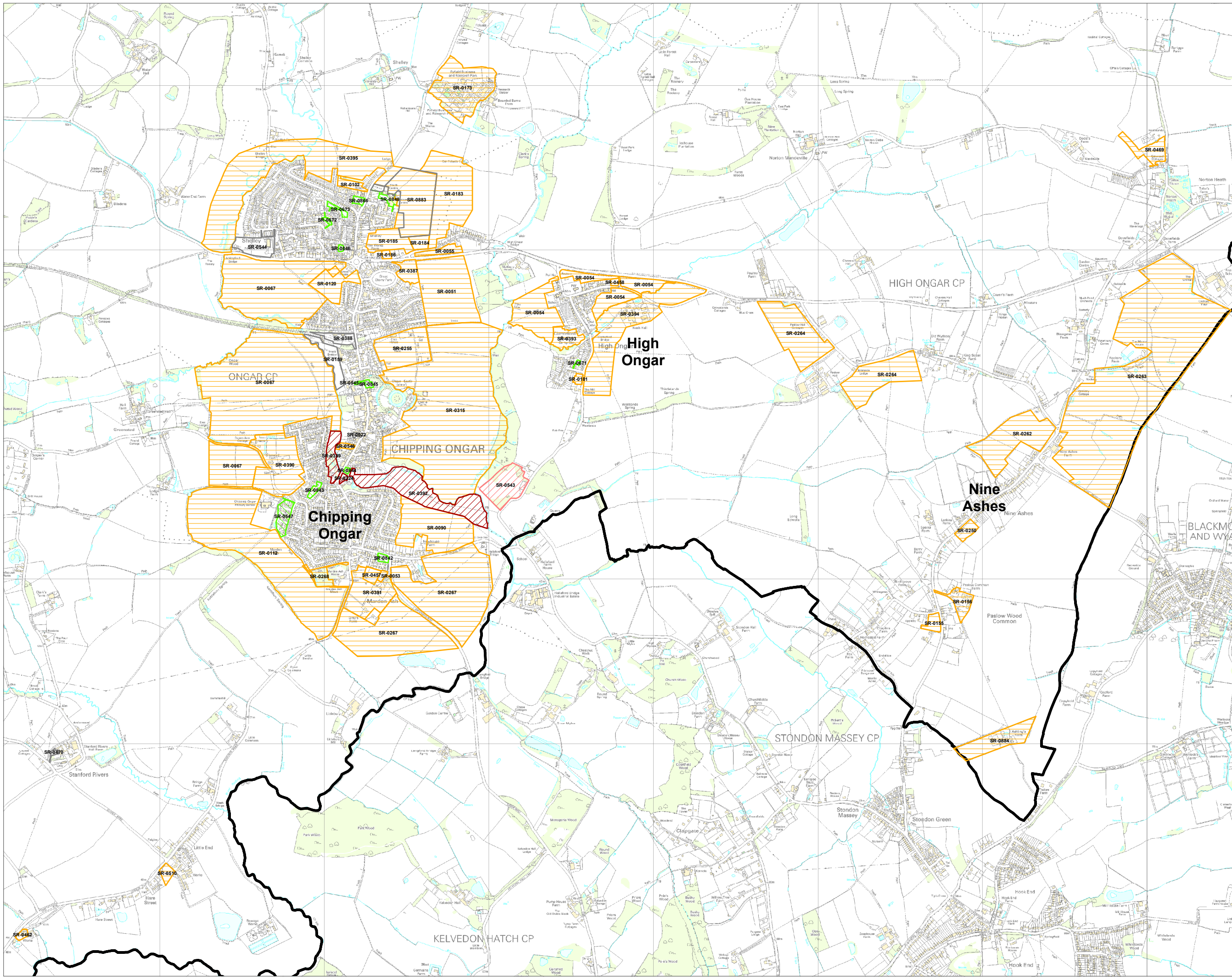
These maps show the emerging headline assessments from the suitability analysis of each site. They should only be interpreted alongside the full SLAA assessment for each site.

Headline site assessments relate to a site in its entirety. Constituent parts of some suitable sites, as per the boundary shown on this map, may not be suitable for development where factors affect only a portion of the site. The capacity of a site to accommodate development has been adjusted in these cases and the headline assessment relates only to the development capacity the SLAA has attributed to the site.

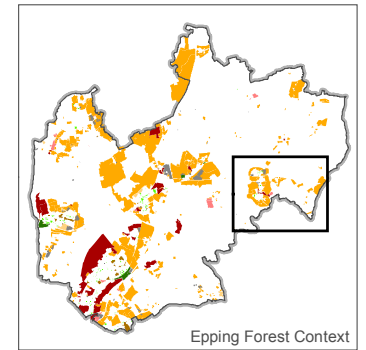
**Nathaniel Lichfield & Partners**  
Planning, Design, Economics.

Project	Epping Forest SLAA
Title	All Sites - Suitability: Fyfield & Willingale
Client	Epping Forest District Council
Date	18.05.2016
Scale	-
Drawn by	MAR
Dwg No	GIS\12991\01-26

Based upon Ordnance Survey mapping with the permission of Her Majesty's Stationery Office. © Crown Copyright reserved. Licence number AL5000AA  
GIS Reference: S:\CL\12991 - Epping Forest SLAA (2016)\CL12991 - Epping Forest SLAA (2016) - All Sites - Suitability (05) - 18.05.2016.mxd



- Key**
- Epping Forest Local Authority Boundary
  - Site Suitability**
  - Sites filtered/discouted
  - Sites unsuitable due to other factors
  - Sites unsuitable due to strategic constraints
  - Sites suitable outside current policy (Green Belt & Other)
  - Sites suitable outside current policy (Green Belt)
  - Sites suitable outside current policy (Other)
  - Sites suitable within current policy
  - Sites suitable for commercial development



The SLAA does not allocate land for development or indicate that the Council would support its development. The sites provide a range of potential locations where development might be considered through the plan.

These maps show the emerging headline assessments from the suitability analysis of each site. They should only be interpreted alongside the full SLAA assessment for each site.

Headline site assessments relate to a site in its entirety. Constituent parts of some suitable sites, as per the boundary shown on this map, may not be suitable for development where factors affect only a portion of the site. The capacity of a site to accommodate development has been adjusted in these cases and the headline assessment relates only to the development capacity the SLAA has attributed to the site.



Project: Epping Forest SLAA

Title: All Sites - Suitability: Chipping Ongar, High Ongar & Nine Ashes

Client: Epping Forest District Council

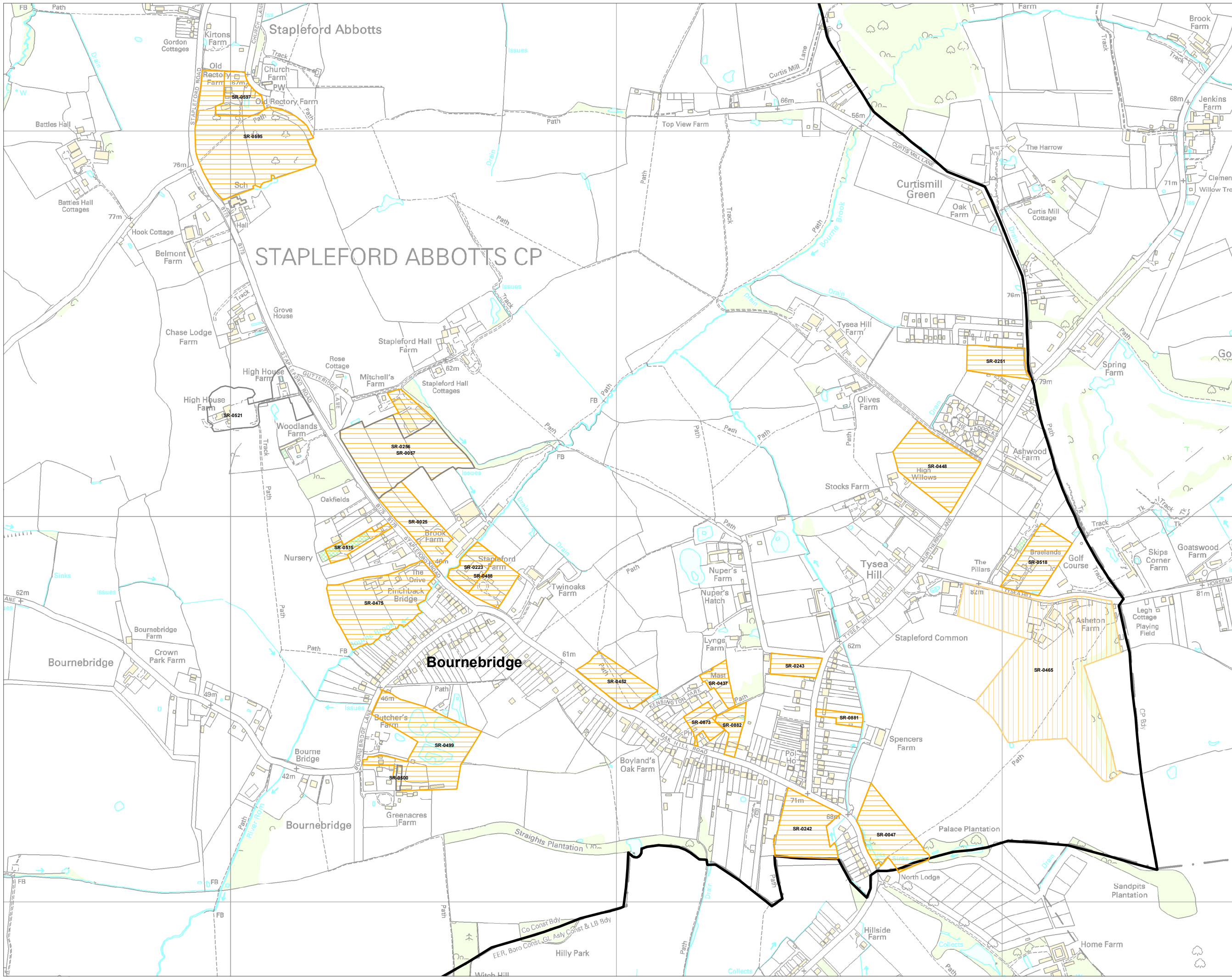
Date: 18.05.2016

Scale: -

Drawn by: MAR

Drp No: GIS1299101-25

Based upon Ordnance Survey mapping with the permission of Her Majesty's Stationery Office. © Crown Copyright reserved. Licence number AL6000AA  
 GIS Reference: S:\GL12991 - Epping Forest SLAA (2016)\JCL12991 - Epping Forest SLAA (2016) - All Sites - Suitability (04) - 18.05.2016.mxd

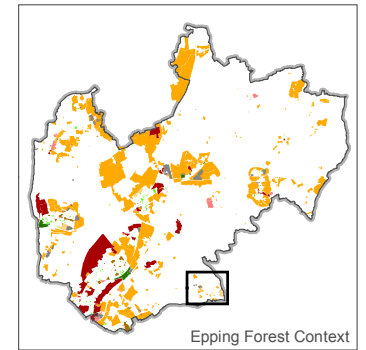


**Key**

- Epping Forest Local Authority Boundary

**Site Suitability**

- Sites filtered/discouraged
- Sites unsuitable due to other factors
- Sites unsuitable due to strategic constraints
- Sites suitable outside current policy (Green Belt & Other)
- Sites suitable outside current policy (Green Belt)
- Sites suitable outside current policy (Other)
- Sites suitable within current policy
- Sites suitable for commercial development



The SLAA does not allocate land for development or indicate that the Council would support its development. The sites provide a range of potential locations where development might be considered through the plan.

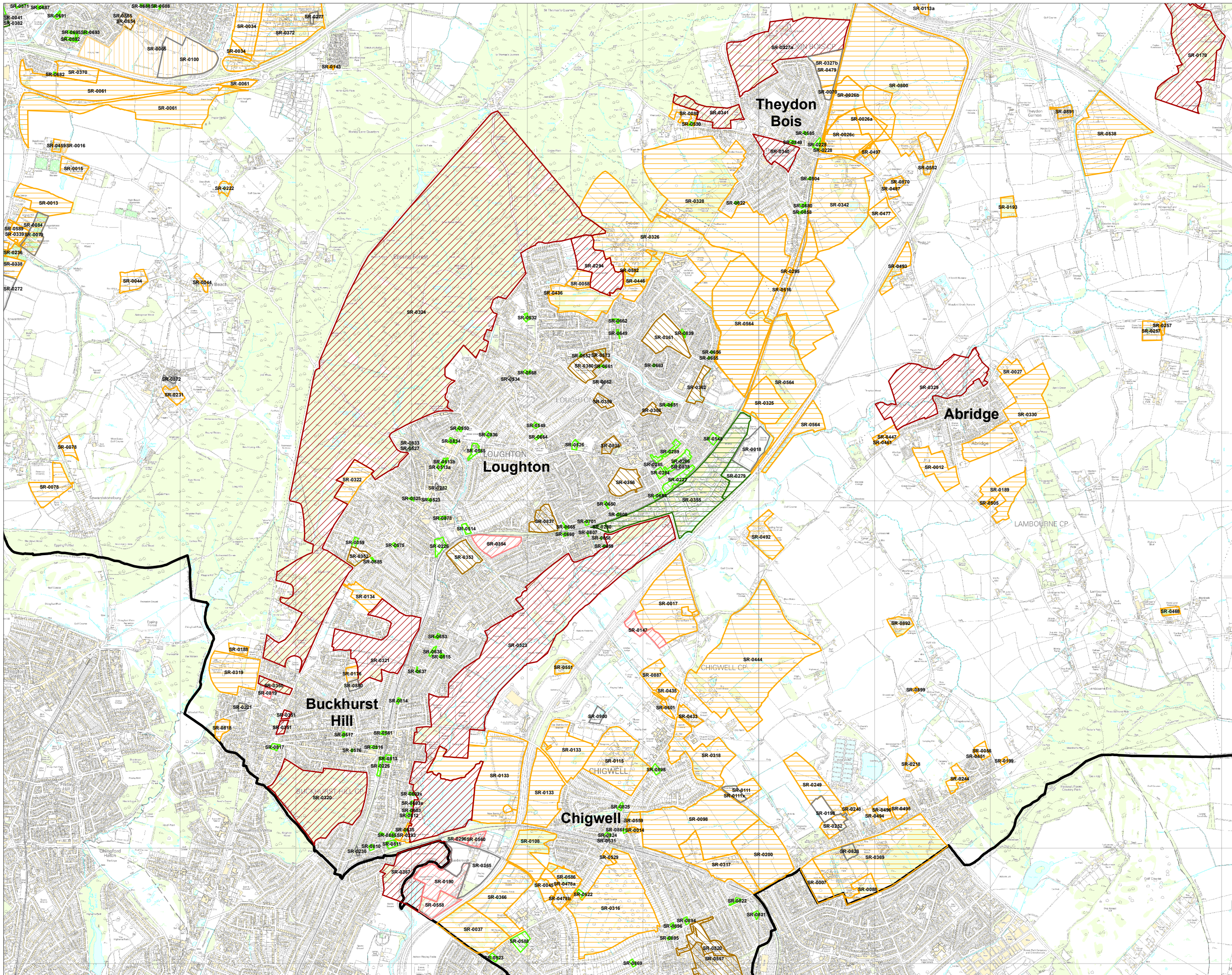
These maps show the emerging headline assessments from the suitability analysis of each site. They should only be interpreted alongside the full SLAA assessment for each site.

Headline site assessments relate to a site in its entirety. Constituent parts of some suitable sites, as per the boundary shown on this map, may not be suitable for development where factors affect only a portion of the site. The capacity of a site to accommodate development has been adjusted in these cases and the headline assessment relates only to the development capacity the SLAA has attributed to the site.

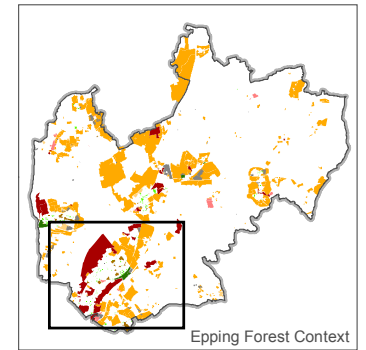
**nlp** Nathaniel Lichfield & Partners  
 Planning, Design, Economics.

Project	Epping Forest SLAA
Title	All Sites - Suitability: Stapleford Abbots
Client	Epping Forest District Council
Date	18.05.2016
Scale	-
Drawn by	MAR
Drg No	GIS12991101-24

Based upon Ordnance Survey mapping with the permission of Her Majesty's Stationery Office. © Crown Copyright reserved. Licence number AL5006A  
 GIS Reference: S:\CL12991 - Epping Forest SLAA (2016)\CL12991 - Epping Forest SLAA (2016) - All Sites - Suitability (03) - 18.05.2016.mxd



- Key**
- Epping Forest Local Authority Boundary
  - Site Suitability**
  - Sites filtered/discouraged
  - Sites unsuitable due to other factors
  - Sites unsuitable due to strategic constraints
  - Sites suitable outside current policy (Green Belt & Other)
  - Sites suitable outside current policy (Green Belt)
  - Sites suitable outside current policy (Other)
  - Sites suitable within current policy
  - Sites suitable for commercial development



The SLAA does not allocate land for development or indicate that the Council would support its development. The sites provide a range of potential locations where development might be considered through the plan.

These maps show the emerging headline assessments from the suitability analysis of each site. They should only be interpreted alongside the full SLAA assessment for each site.

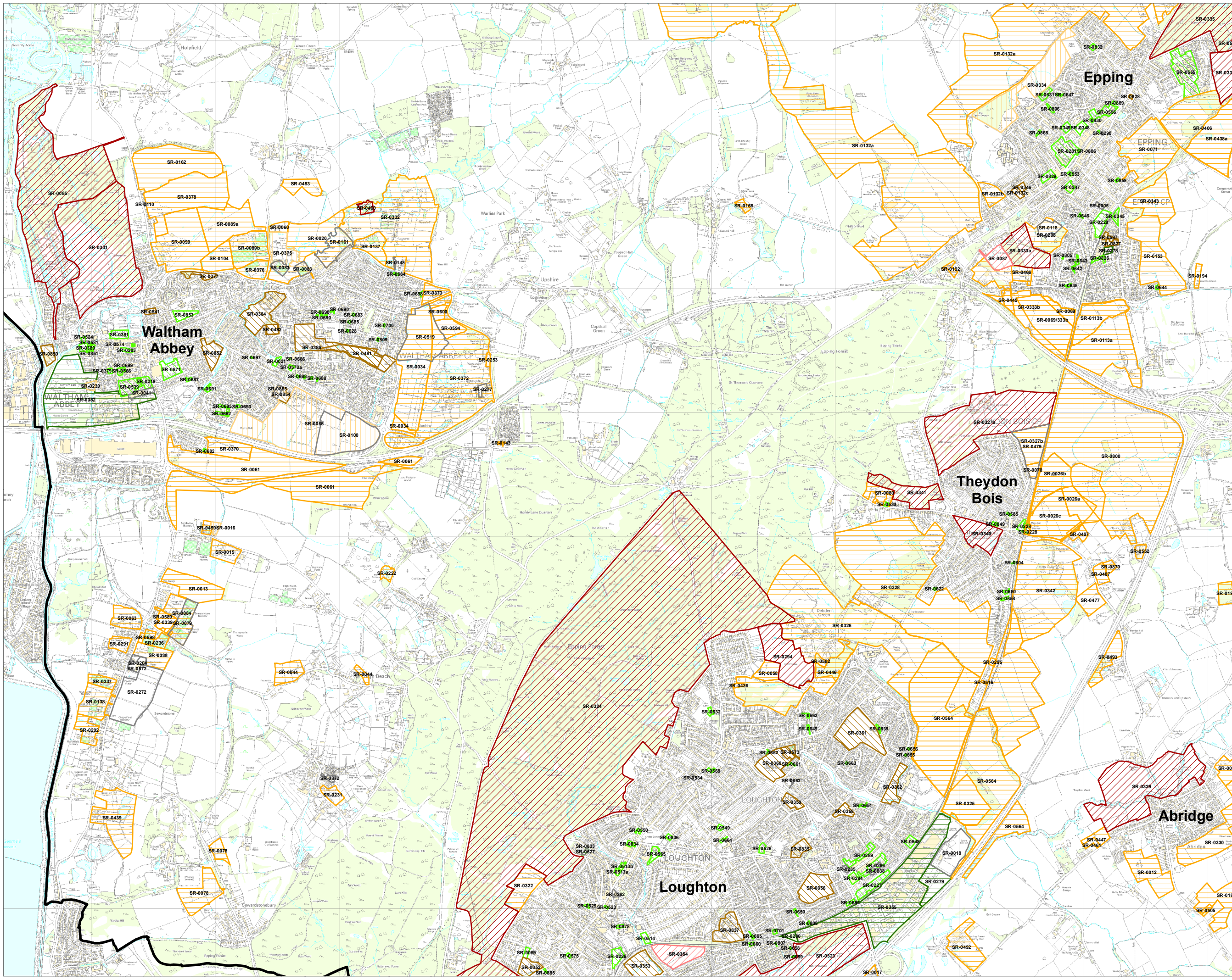
Headline site assessments relate to a site in its entirety. Constituent parts of some suitable sites, as per the boundary shown on this map, may not be suitable for development where factors affect only a portion of the site. The capacity of a site to accommodate development has been adjusted in these cases and the headline assessment relates only to the development capacity the SLAA has attributed to the site.



Project	Epping Forest SLAA
Title	All Sites - Suitability: Abridge, Buckhurst Hill, Chigwell, Loughton & Theydon Bois
Client	Epping Forest District Council
Date	18.05.2016
Scale	-
Drawn by	MAR
Drp No	GIS1299101-23

Based upon Ordnance Survey mapping with the permission of Her Majesty's Stationery Office. © Crown Copyright reserved. Licence number AL5000AA  
 GIS Reference: S:\CL12991 - Epping Forest SLAA (2016)\CL12991 - Epping Forest SLAA (2016) - All Sites - Suitability (02) - 18.05.2016.mxd



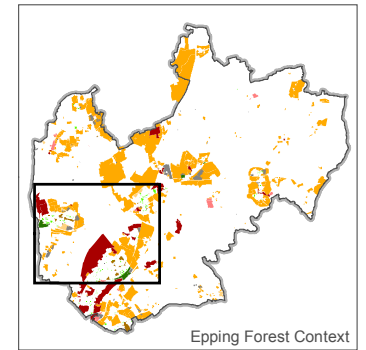


**Key**

- Epping Forest Local Authority Boundary

**Site Suitability**

- Sites filtered/discouraged
- Sites unsuitable due to other factors
- Sites unsuitable due to strategic constraints
- Sites suitable outside current policy (Green Belt & Other)
- Sites suitable outside current policy (Green Belt)
- Sites suitable outside current policy (Other)
- Sites suitable within current policy
- Sites suitable for commercial development



The SLAA does not allocate land for development or indicate that the Council would support its development. The sites provide a range of potential locations where development might be considered through the plan.

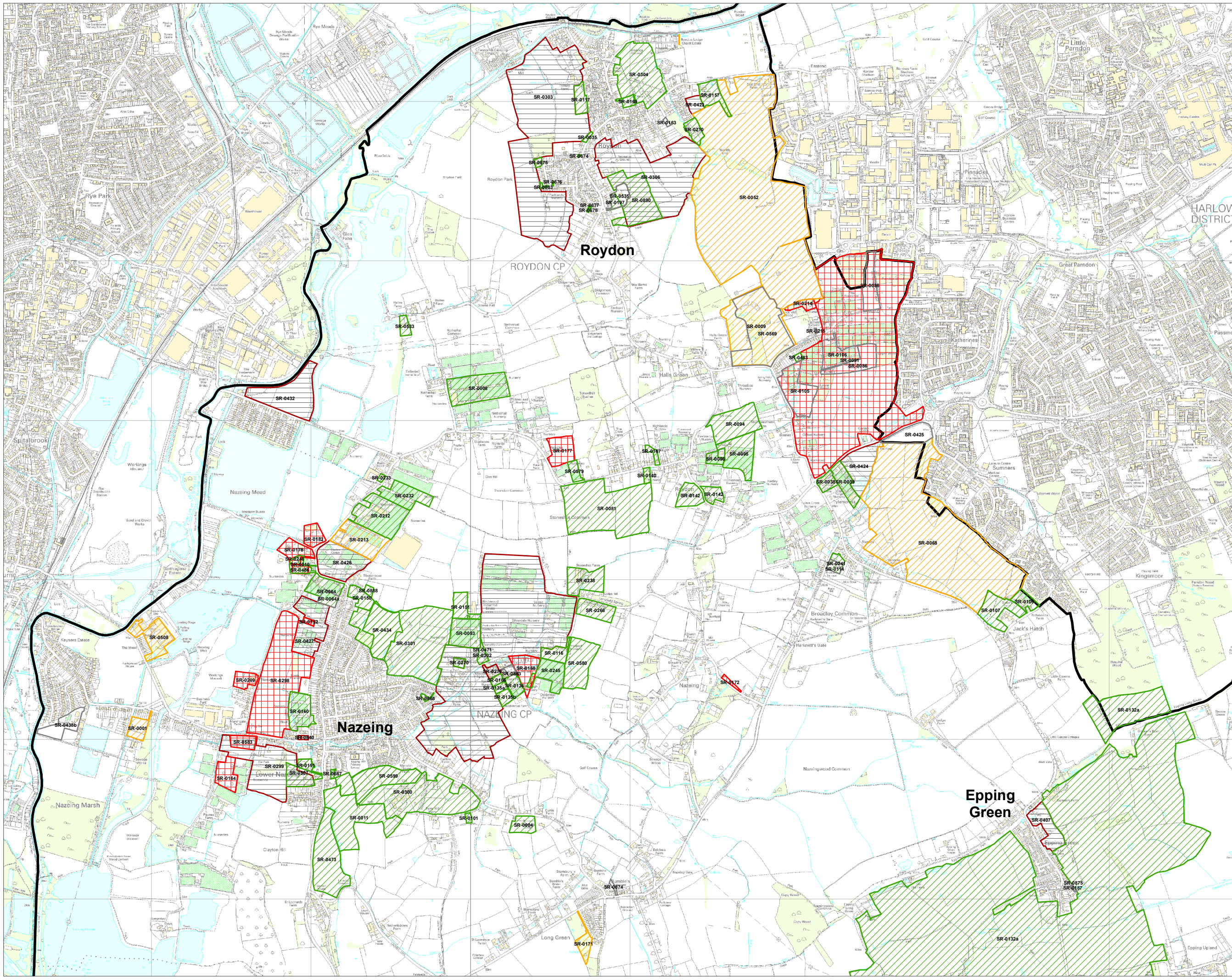
These maps show the emerging headline assessments from the suitability analysis of each site. They should only be interpreted alongside the full SLAA assessment for each site.

Headline site assessments relate to a site in its entirety. Constituent parts of some suitable sites, as per the boundary shown on this map, may not be suitable for development where factors affect only a portion of the site. The capacity of a site to accommodate development has been adjusted in these cases and the headline assessment relates only to the development capacity the SLAA has attributed to the site.

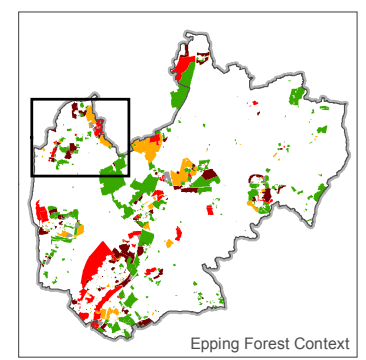
**Nathaniel Lichfield & Partners**  
Planning, Design, Economics.

Project	Epping Forest SLAA
Title	All Sites - Suitability: Abridge, Epping, Loughton, Theydon Bois & Waltham Abbey
Client	Epping Forest District Council
Date	18.05.2016
Scale	-
Drawn by	MAR
Drg No	GIS1299101-22

Based upon Ordnance Survey mapping with the permission of Her Majesty's Stationery Office. © Crown Copyright reserved. Licence number AL50004A  
GIS Reference: S:\CL12991 - Epping Forest SLAA (2016)\CL12991 - Epping Forest SLAA (2016) - All Sites - Suitability (01) - 18.05.2016.mxd



- Key**
- Epping Forest Local Authority Boundary
  - Final Headline Assessment**
  - Deliverable
  - Developable
  - Filtered
  - Not Deliverable or Developable - Not Achievable
  - Not Deliverable or Developable - Not Available
  - Not Deliverable or Developable - Not Suitable
  - Not Deliverable or Developable - Unknown Availability



The SLAA does not allocate land for development or indicate that the Council would support its development. The sites provide a range of potential locations where development might be considered through the plan.

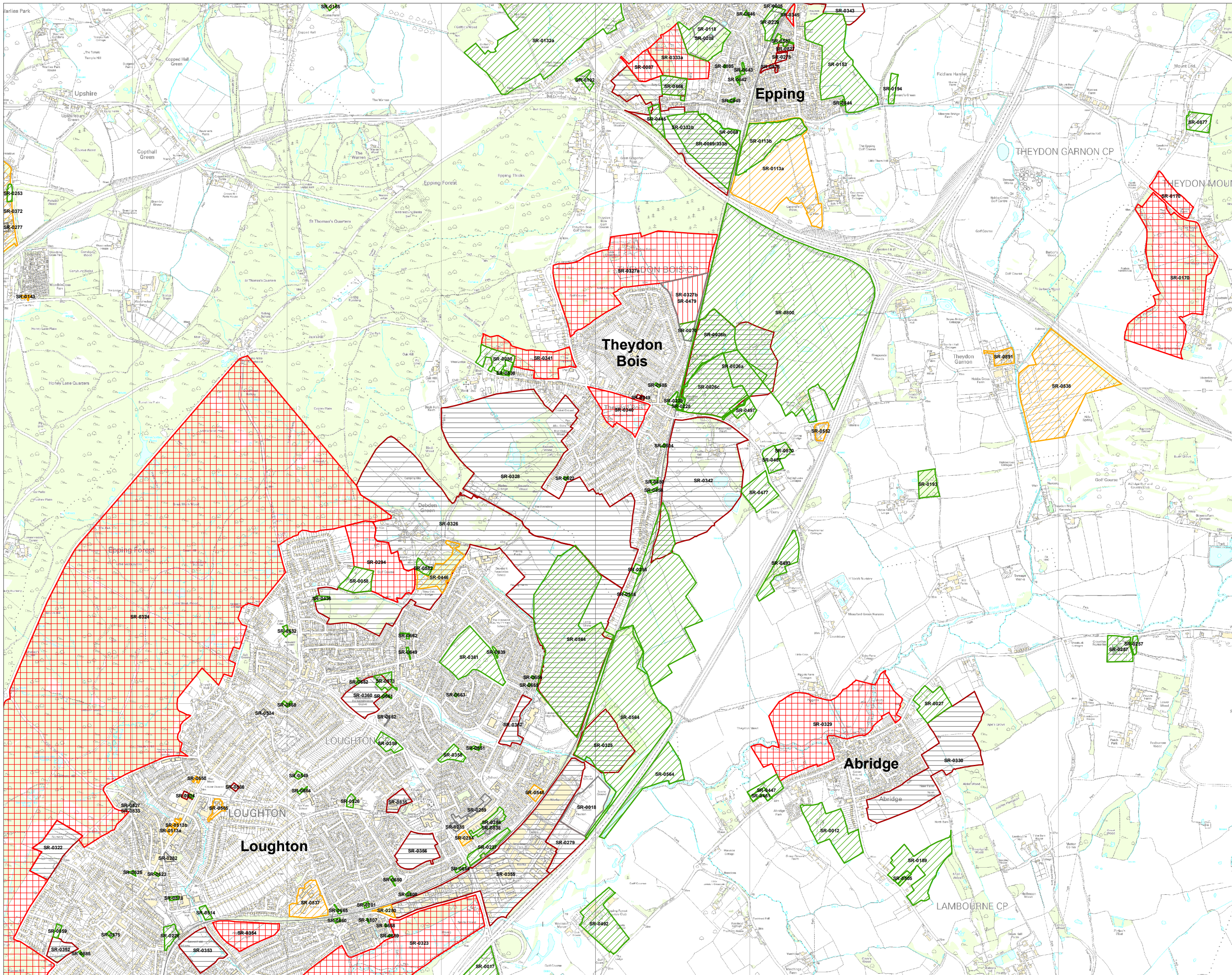
These maps show the emerging headline assessments from the deliverability and developability analysis of each site. They should only be interpreted alongside the full SLAA assessment for each site.

Headline site assessments relate to a site in its entirety. Constituent parts of some suitable sites, as per the boundary shown on this map, may not be suitable for development where factors affect only a portion of the site. The capacity of a site to accommodate development has been adjusted in these cases and the headline assessment relates only to the development capacity the SLAA has attributed to the site.

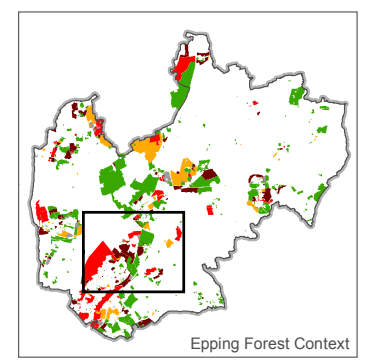


Project	Epping Forest SLAA
Title	All Sites - Deliverability: Epping Green, Nazeing & Roydon
Client	Epping Forest District Council
Date	18.05.2016
Scale	-
Drawn by	MAR
Drp No	GIS1299101-21

Based upon Ordnance Survey mapping with the permission of Her Majesty's Stationery Office. © Crown Copyright reserved. Licence number AL5000A  
GIS Reference: S:\CL12991 - Epping Forest SLAA (2016)\CL12991 - Epping Forest SLAA (2016) - All Sites - Deliverability (09) - 18.05.2016.mxd



- Key**
- Epping Forest Local Authority Boundary
  - Final Headline Assessment**
  - Deliverable
  - Developable
  - Filtered
  - Not Deliverable or Developable - Not Achievable
  - Not Deliverable or Developable - Not Available
  - Not Deliverable or Developable - Not Suitable
  - Not Deliverable or Developable - Unknown Availability



The SLAA does not allocate land for development or indicate that the Council would support its development. The sites provide a range of potential locations where development might be considered through the plan.

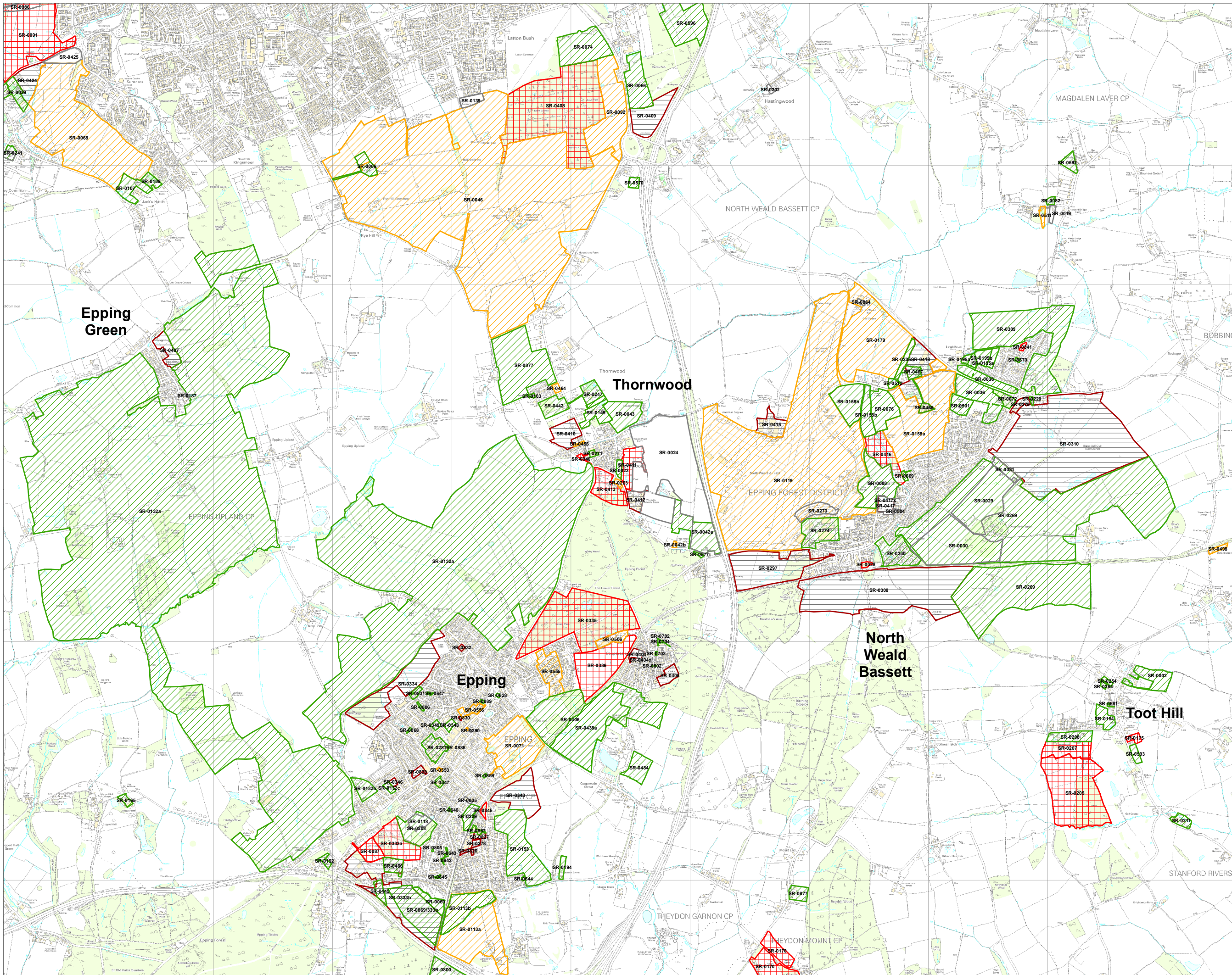
These maps show the emerging headline assessments from the deliverability and developability analysis of each site. They should only be interpreted alongside the full SLAA assessment for each site.

Headline site assessments relate to a site in its entirety. Constituent parts of some suitable sites, as per the boundary shown on this map, may not be suitable for development where factors affect only a portion of the site. The capacity of a site to accommodate development has been adjusted in these cases and the headline assessment relates only to the development capacity the SLAA has attributed to the site.



Project	Epping Forest SLAA
Title	All Sites - Deliverability: Abridge, Epping, Loughton & Theydon Bois
Client	Epping Forest District Council
Date	18.05.2016
Scale	-
Drawn by	MAR
Drp No	GIS\12991\01-20

Based upon Ordnance Survey mapping with the permission of Her Majesty's Stationery Office. © Crown Copyright reserved. Licence number AL50064A  
 GIS Reference: S:\CL\12991 - Epping Forest SLAA (2016)\CL12991 - Epping Forest SLAA (2016) - All Sites - Deliverability (06) - 18.05.2016.mxd

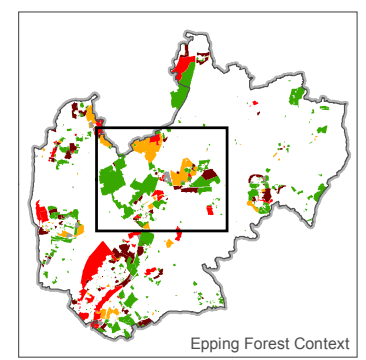


**Key**

- Epping Forest Local Authority Boundary

**Final Headline Assessment**

- Deliverable
- Developable
- Filtered
- Not Deliverable or Developable - Not Achievable
- Not Deliverable or Developable - Not Available
- Not Deliverable or Developable - Not Suitable
- Not Deliverable or Developable - Unknown Availability



The SLAA does not allocate land for development or indicate that the Council would support its development. The sites provide a range of potential locations where development might be considered through the plan.

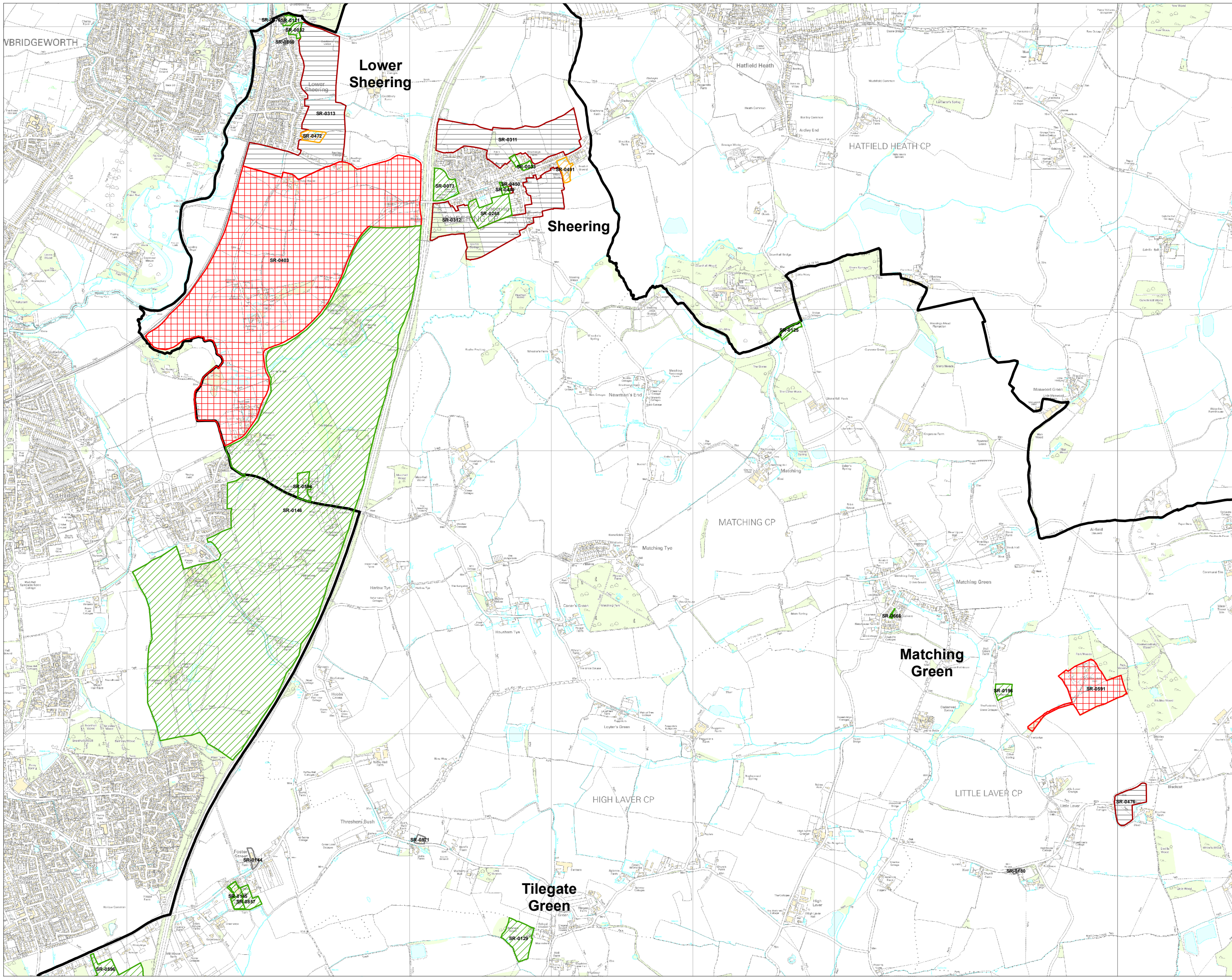
These maps show the emerging headline assessments from the deliverability and developability analysis of each site. They should only be interpreted alongside the full SLAA assessment for each site.

Headline site assessments relate to a site in its entirety. Constituent parts of some suitable sites, as per the boundary shown on this map, may not be suitable for development where factors affect only a portion of the site. The capacity of a site to accommodate development has been adjusted in these cases and the headline assessment relates only to the development capacity the SLAA has attributed to the site.



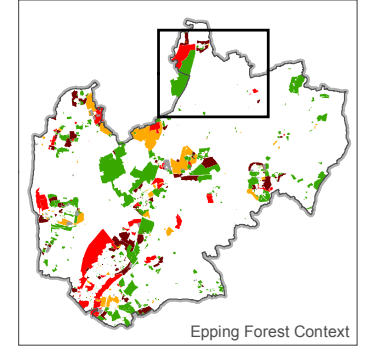
Project	Epping Forest SLAA
Title	All Sites - Deliverability: Epping, Epping Green, North Weald Bassett, Thornwood & Toot Hill
Client	Epping Forest District Council
Date	18.05.2016
Scale	-
Drawn by	MAR
Drp No	GIS\12991\01-19

Based upon Ordnance Survey mapping with the permission of Her Majesty's Stationery Office. © Crown Copyright reserved. Licence number AL5006A  
 GIS Reference: S:\CL12991 - Epping Forest SLAA (2016)\CL12991 - Epping Forest SLAA (2016) - All Sites - Deliverability (07) - 18.05.2016.mxd



**Key**

- Epping Forest Local Authority Boundary
- Final Headline Assessment**
- Deliverable
- Developable
- Filtered
- Not Deliverable or Developable - Not Achievable
- Not Deliverable or Developable - Not Available
- Not Deliverable or Developable - Not Suitable
- Not Deliverable or Developable - Unknown Availability



The SLAA does not allocate land for development or indicate that the Council would support its development. The sites provide a range of potential locations where development might be considered through the plan.

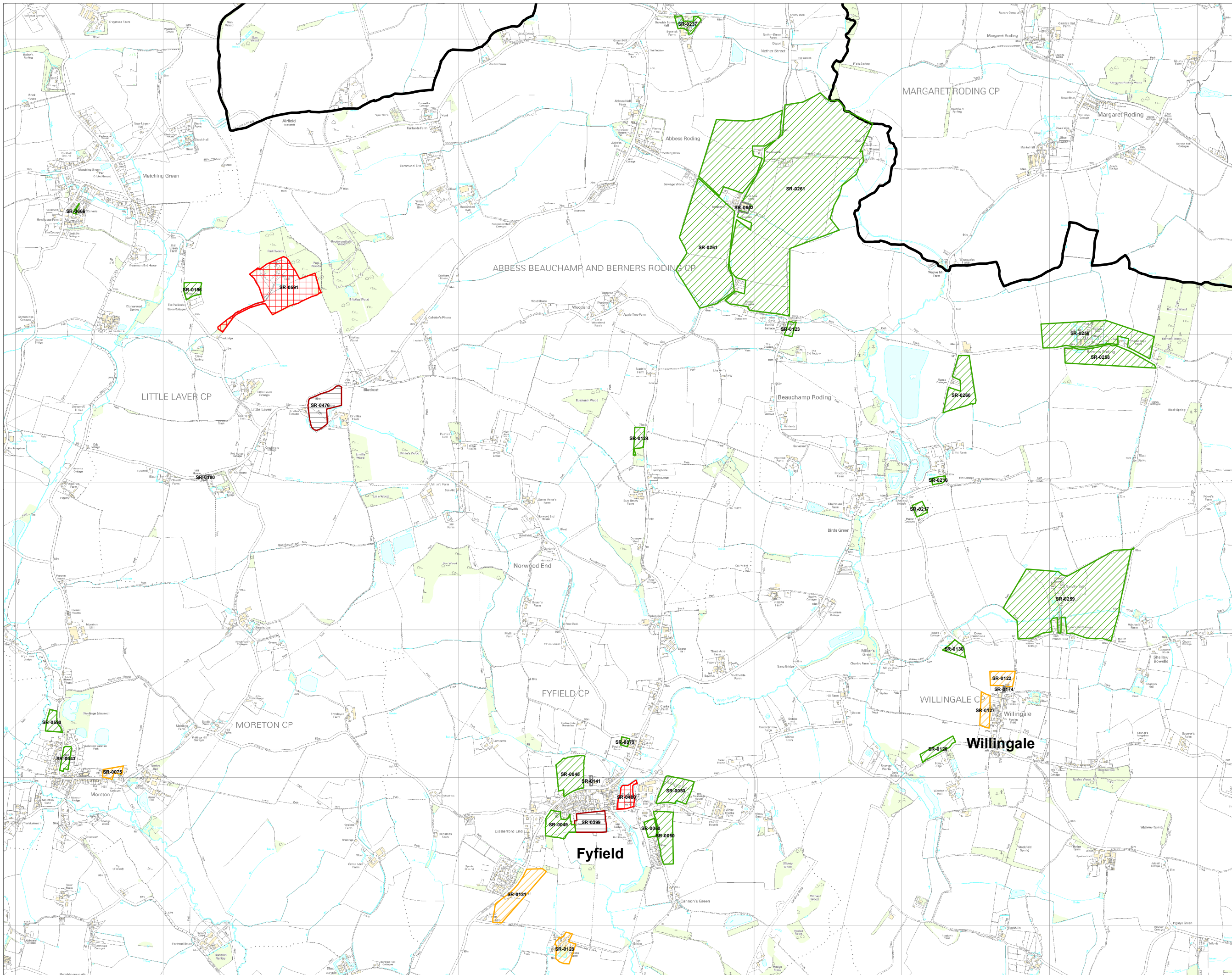
These maps show the emerging headline assessments from the deliverability and developability analysis of each site. They should only be interpreted alongside the full SLAA assessment for each site.

Headline site assessments relate to a site in its entirety. Constituent parts of some suitable sites, as per the boundary shown on this map, may not be suitable for development where factors affect only a portion of the site. The capacity of a site to accommodate development has been adjusted in these cases and the headline assessment relates only to the development capacity the SLAA has attributed to the site.



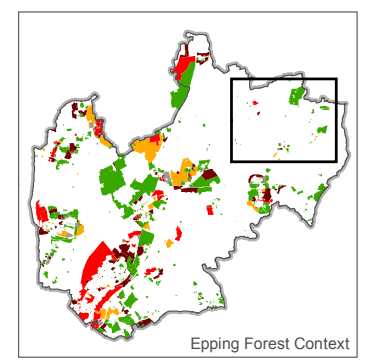
Project	Epping Forest SLAA
Title	All Sites - Deliverability: Lower Sheering, Matching Green, Sheering & Tilegate Green
Client	Epping Forest District Council
Date	18.05.2016
Scale	-
Drawn by	MAR
Drg No	GIS12991/01-18

Based upon Ordnance Survey mapping with the permission of Her Majesty's Stationery Office. © Crown Copyright reserved. Licence number AL6000A  
 GIS Reference: S:\CL12991 - Epping Forest SLAA (2016)\CL12991 - Epping Forest SLAA (2016) - All Sites - Deliverability (06) - 18.05.2016.mxd



**Key**

- Epping Forest Local Authority Boundary
- Final Headline Assessment**
- Deliverable
- Developable
- Filtered
- Not Deliverable or Developable - Not Achievable
- Not Deliverable or Developable - Not Available
- Not Deliverable or Developable - Not Suitable
- Not Deliverable or Developable - Unknown Availability



The SLAA does not allocate land for development or indicate that the Council would support its development. The sites provide a range of potential locations where development might be considered through the plan.

These maps show the emerging headline assessments from the deliverability and developability analysis of each site. They should only be interpreted alongside the full SLAA assessment for each site.

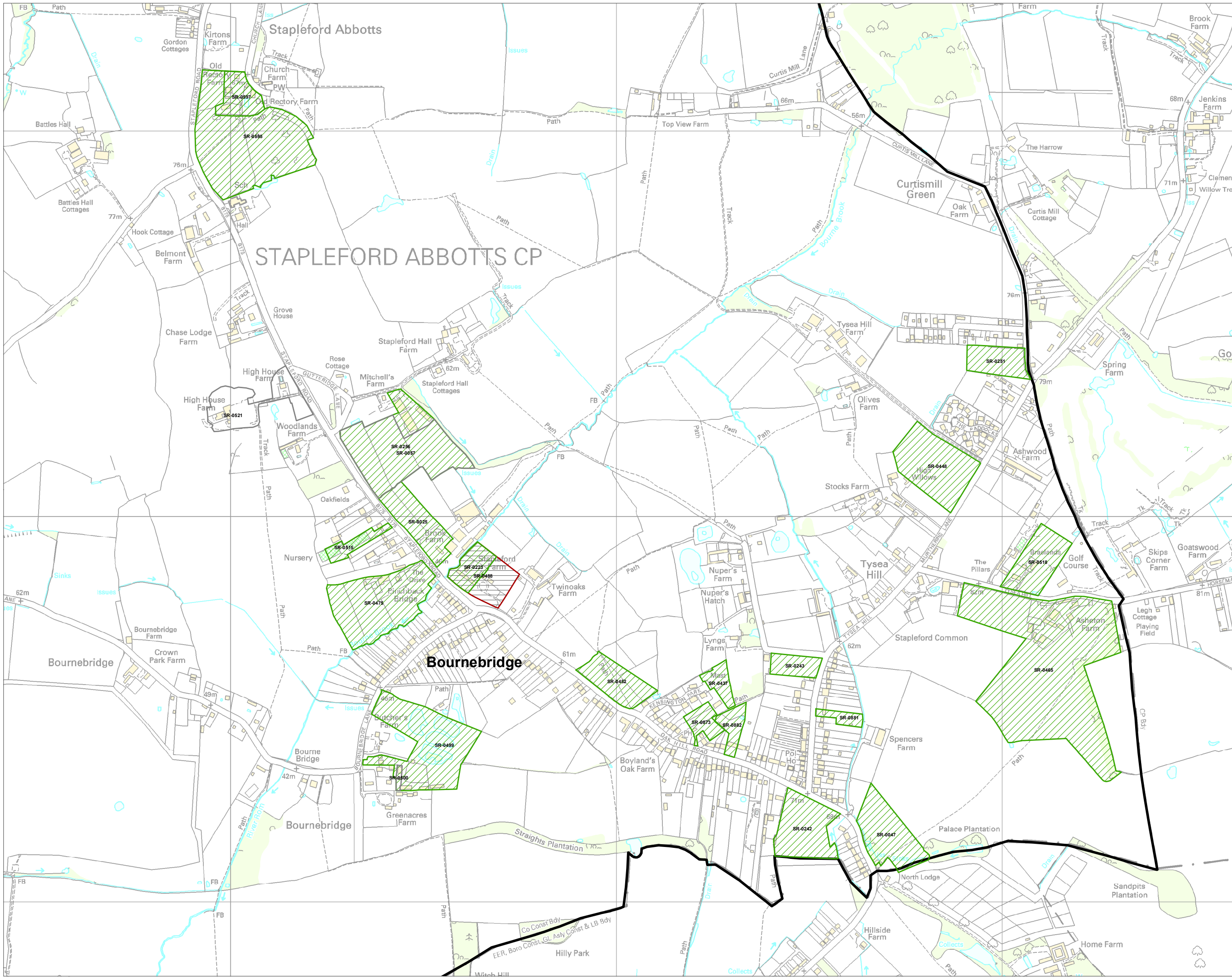
Headline site assessments relate to a site in its entirety. Constituent parts of some suitable sites, as per the boundary shown on this map, may not be suitable for development where factors affect only a portion of the site. The capacity of a site to accommodate development has been adjusted in these cases and the headline assessment relates only to the development capacity the SLAA has attributed to the site.



Project	Epping Forest SLAA
Title	All Sites - Deliverability: Fyfield & Willingale
Client	Epping Forest District Council
Date	18.05.2016
Scale	-
Drawn by	MAR
Drp No	GIS\12991\01-17

Based upon Ordnance Survey mapping with the permission of Her Majesty's Stationery Office. © Crown Copyright reserved. Licence number AL6000AA  
 GIS Reference: S:\CL\12991 - Epping Forest SLAA (2016)\CL12991 - Epping Forest SLAA (2016) - All Sites - Deliverability (05) - 18.05.2016.mxd



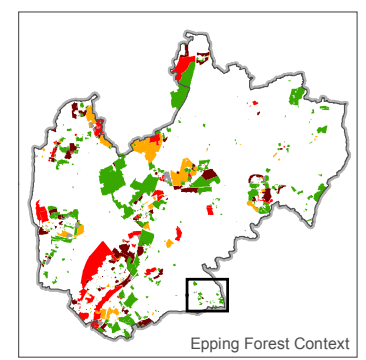


**Key**

- Epping Forest Local Authority Boundary

**Final Headline Assessment**

- Deliverable
- Developable
- Filtered
- Not Deliverable or Developable - Not Achievable
- Not Deliverable or Developable - Not Available
- Not Deliverable or Developable - Not Suitable
- Not Deliverable or Developable - Unknown Availability



The SLAA does not allocate land for development or indicate that the Council would support its development. The sites provide a range of potential locations where development might be considered through the plan.

These maps show the emerging headline assessments from the deliverability and developability analysis of each site. They should only be interpreted alongside the full SLAA assessment for each site.

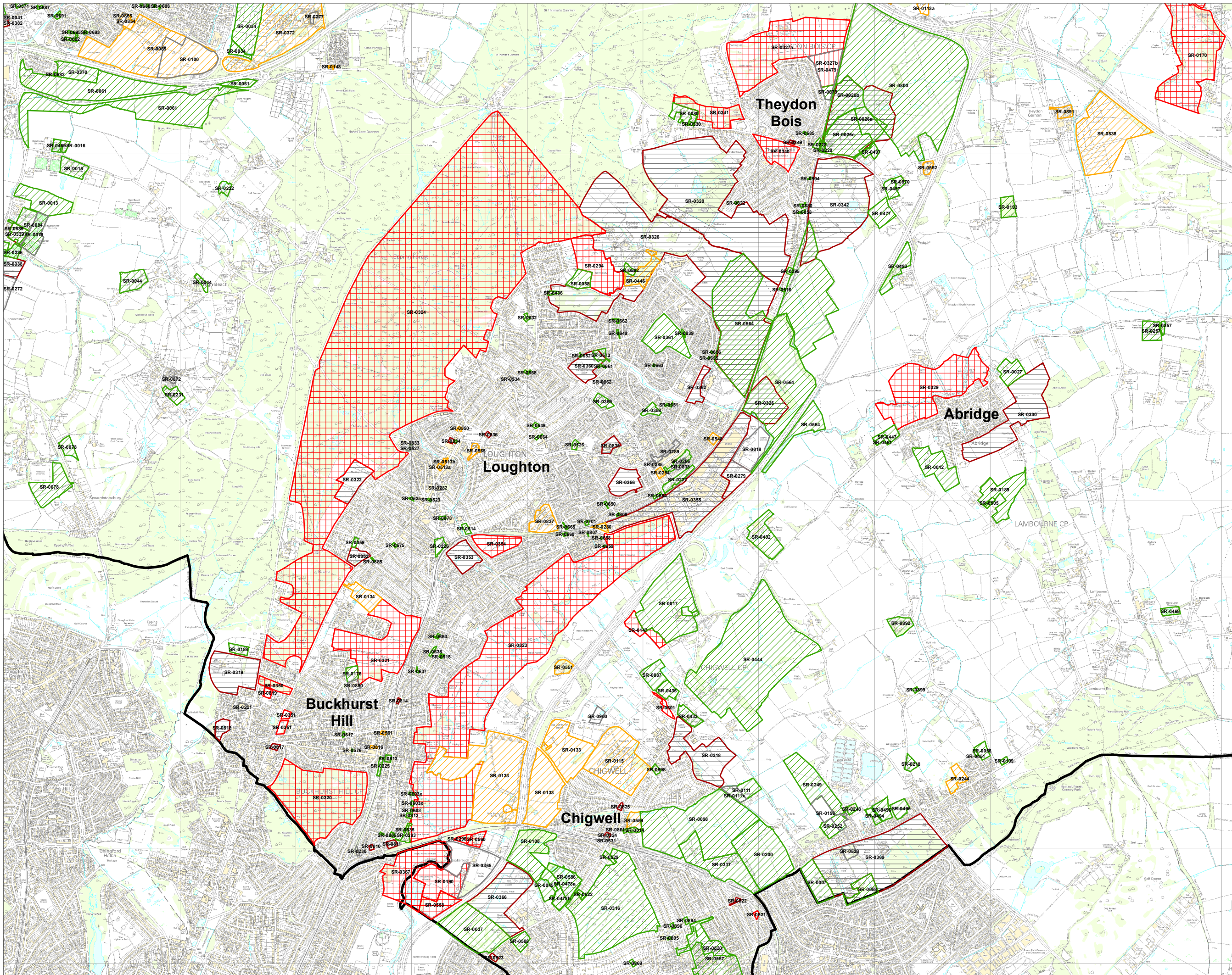
Headline site assessments relate to a site in its entirety. Constituent parts of some suitable sites, as per the boundary shown on this map, may not be suitable for development where factors affect only a portion of the site. The capacity of a site to accommodate development has been adjusted in these cases and the headline assessment relates only to the development capacity the SLAA has attributed to the site.

**nlp** Nathaniel Lichfield & Partners  
 Planning, Design, Economics.

Project	Epping Forest SLAA
Title	All Sites - Deliverability: Stapleford Abbots
Client	Epping Forest District Council
Date	18.05.2016
Scale	-
Drawn by	MAR
Drg No	GIS12991101-15

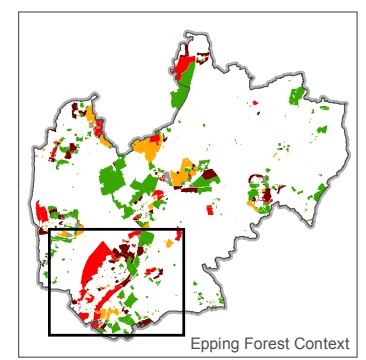
Based upon Ordnance Survey mapping with the permission of Her Majesty's Stationery Office. © Crown Copyright reserved. Licence number AL5006A  
 GIS Reference: S:\CL12991 - Epping Forest SLAA (2016)\CL12991 - Epping Forest SLAA (2016) - All Sites - Deliverability (03) - 18.05.2016.mxd





**Key**

- Epping Forest Local Authority Boundary
- Final Headline Assessment**
- Deliverable
- Developable
- Filtered
- Not Deliverable or Developable - Not Achievable
- Not Deliverable or Developable - Not Available
- Not Deliverable or Developable - Not Suitable
- Not Deliverable or Developable - Unknown Availability



The SLAA does not allocate land for development or indicate that the Council would support its development. The sites provide a range of potential locations where development might be considered through the plan.

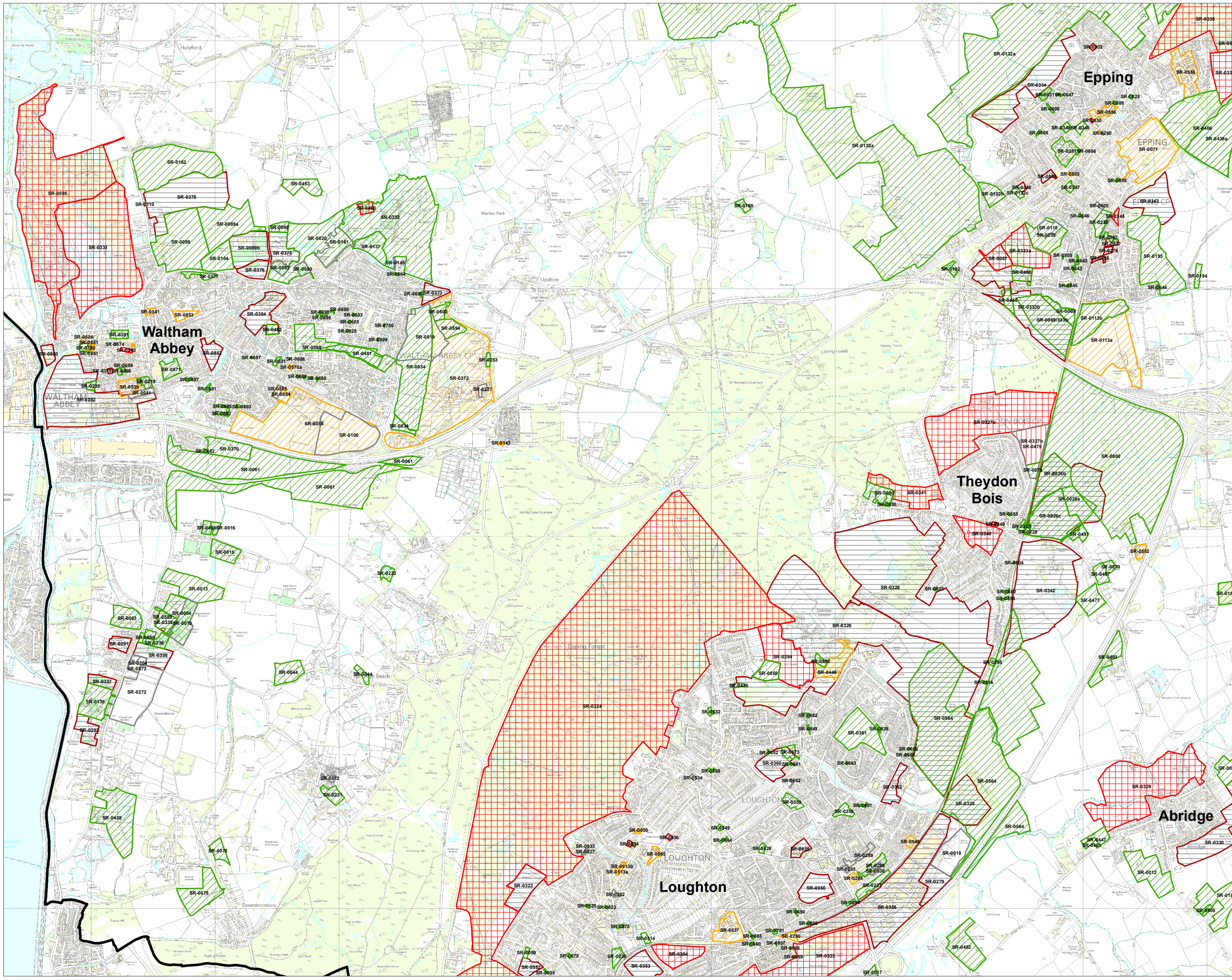
These maps show the emerging headline assessments from the deliverability and developability analysis of each site. They should only be interpreted alongside the full SLAA assessment for each site.

Headline site assessments relate to a site in its entirety. Constituent parts of some suitable sites, as per the boundary shown on this map, may not be suitable for development where factors affect only a portion of the site. The capacity of a site to accommodate development has been adjusted in these cases and the headline assessment relates only to the development capacity the SLAA has attributed to the site.



Project	Epping Forest SLAA
Title	All Sites - Deliverability: Abridge, Buckhurst Hill, Chigwell, Loughton & Theydon Bois
Client	Epping Forest District Council
Date	18.05.2016
Scale	-
Drawn by	MAR
Drp No	GIS1299101-14

Based upon Ordnance Survey mapping with the permission of Her Majesty's Stationery Office. © Crown Copyright reserved. Licence number AL5000AA  
 GIS Reference: S:\CL\2991 - Epping Forest SLAA (2016)\CL12991 - Epping Forest SLAA (2016) - All Sites - Deliverability (02) - 18.05.2016.mxd

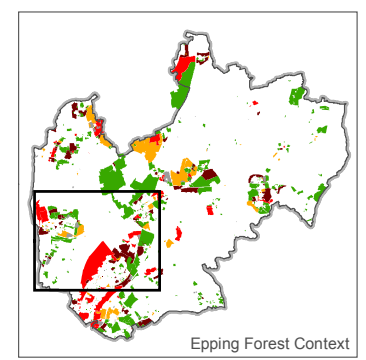


**Key**

- Epping Forest Local Authority Boundary

**Final Headline Assessment**

- Deliverable
- Developable
- Filtered
- Not Deliverable or Developable - Not Achievable
- Not Deliverable or Developable - Not Available
- Not Deliverable or Developable - Not Suitable
- Not Deliverable or Developable - Unknown Availability



The SLAA does not allocate land for development or indicate that the Council would support its development. The sites provide a range of potential locations where development might be considered through the plan.

These maps show the emerging headline assessments from the deliverability and developability analysis of each site. They should only be interpreted alongside the full SLAA assessment for each site.

Headline site assessments relate to a site in its entirety. Constituent parts of some suitable sites, as per the boundary shown on this map, may not be suitable for development where factors affect only a portion of the site. The capacity of a site to accommodate development has been adjusted in these cases and the headline assessment relates only to the development capacity the SLAA has attributed to the site.

Project	Epping Forest SLAA
Title	All Sites - Deliverability: Abridge, Epping, Loughton, Theydon Bois & Waltham Abbey
Client	Epping Forest District Council
Date	18.05.2016
Scale	-
Drawn by	MAR
Drg No	GIS12991/01-13

Based upon Ordnance Survey mapping with the permission of Her Majesty's Stationery Office. © Crown Copyright reserved. Licence number AL50004A  
 GIS Reference: S:\CL\2991 - Epping Forest SLAA (2016)\CL\2991 - Epping Forest SLAA (2016) - All Sites - Deliverability (01) - 18.05.2016.mxd